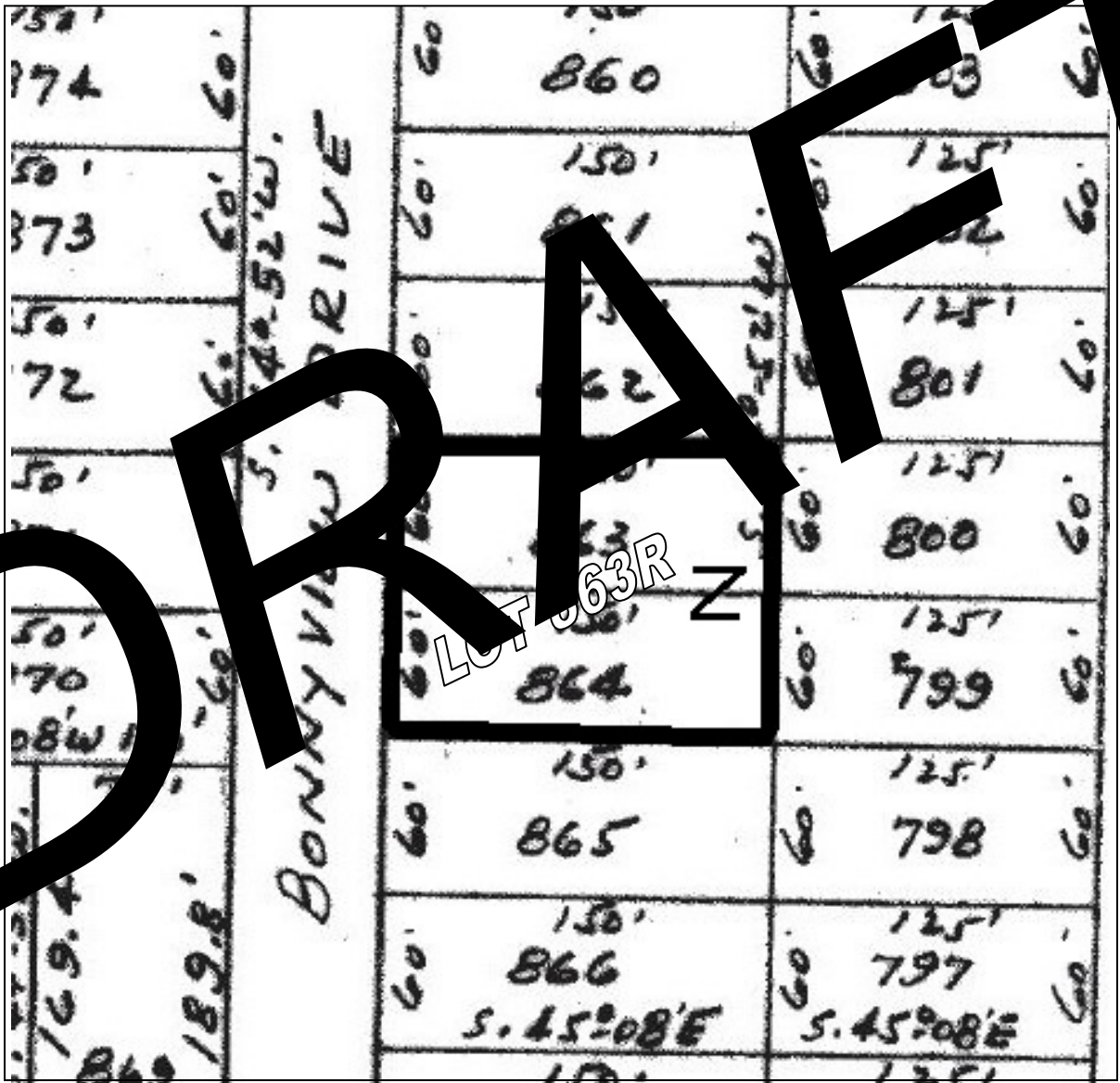


Amendment to Plat
CANYON LAKE FOREST, UNIT NO. 2
(Volume 1, Page 73, Map and Plat Records, Comal County, Texas)
Combining Lots 863 and 864
Establishing Lot 863R



Please refer to the recorded subdivision plat, *Canyon Lake Forest, Unit No. 2* (Volume 1, Page 73, Map and Plat Records, Comal County, Texas), for original lot dimensions and further information.

EXHIBIT - NOT FOR RECORDING

