





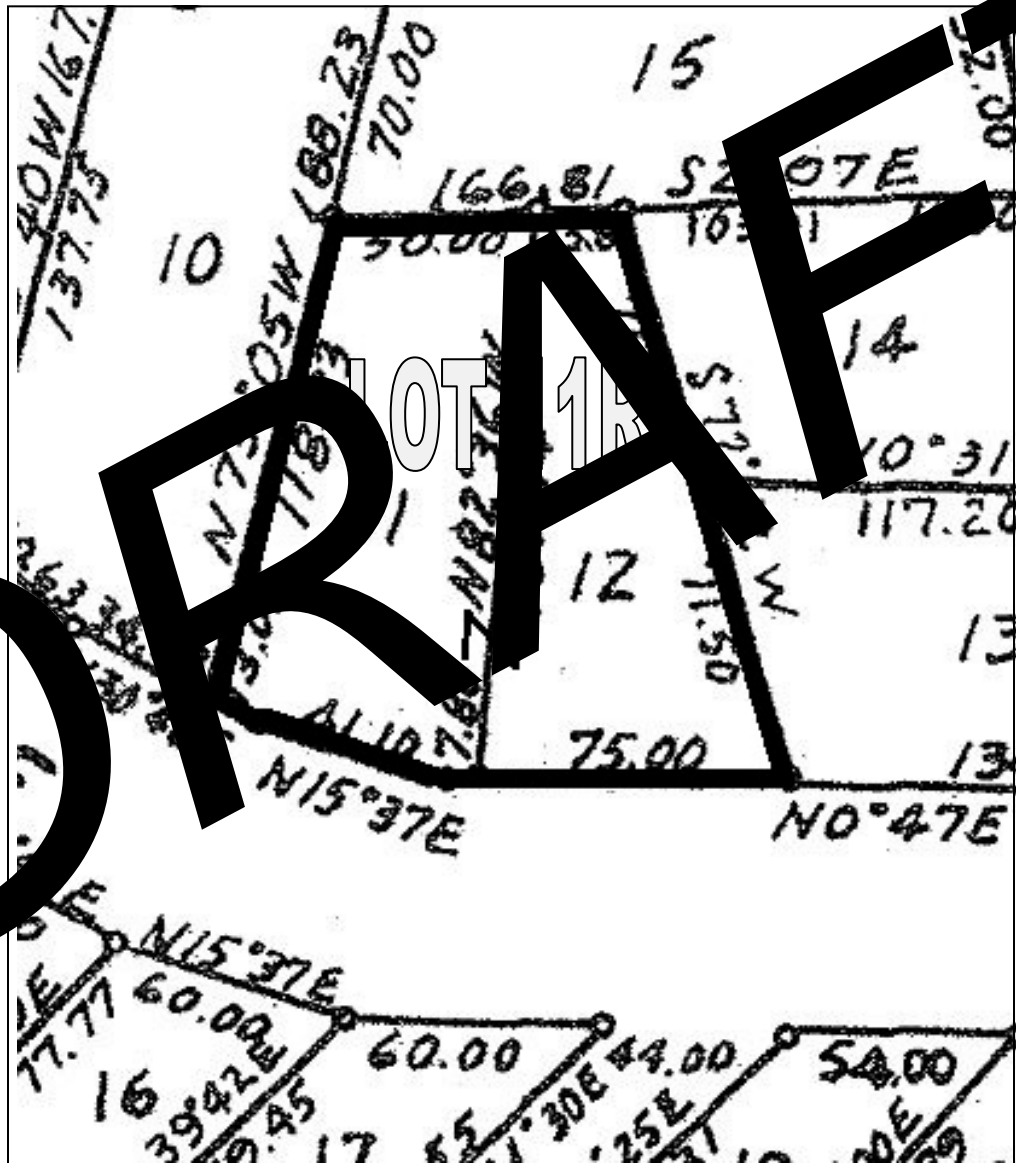
# Amendment to Plat

## SCENIC TERRACE, SECTION 1

(Volume 2, Page 84 Map and Plat Records, Comal County, Texas)

### Combining Lots 11 and 12 of Block 2

### Establishing Lot 11R



Please refer to the recorded subdivision plat, *Scenic Terrace, Section 1* (Volume 2, Page 84, Map and Plat Records, Comal County, Texas), for original lot dimensions and further information.

EXHIBIT - NOT FOR RECORDING





