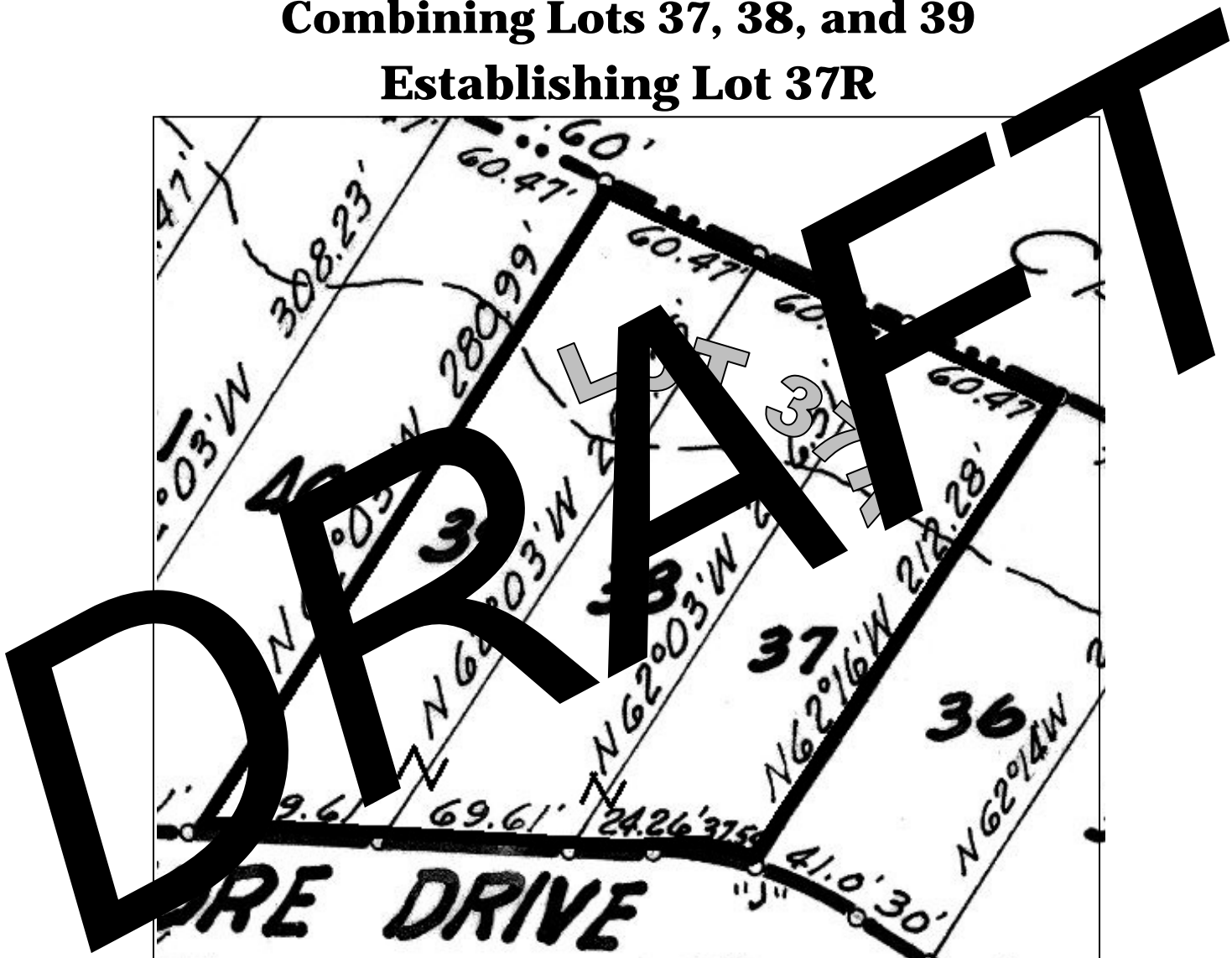


Amendment to Plat
VILLAGE SHORES SUBDIVISION, UNIT ONE
(Volume 3, Page 34, Map and Plat Records, Comal County, Texas)
Combining Lots 37, 38, and 39
Establishing Lot 37R



Please refer to the recorded subdivision plat, *Village Shores Subdivision, Unit One* (Volume 3, Page 34, Map and Plat Records, Comal County, Texas), for original lot dimensions and further information.

EXHIBIT - NOT FOR RECORDING

