





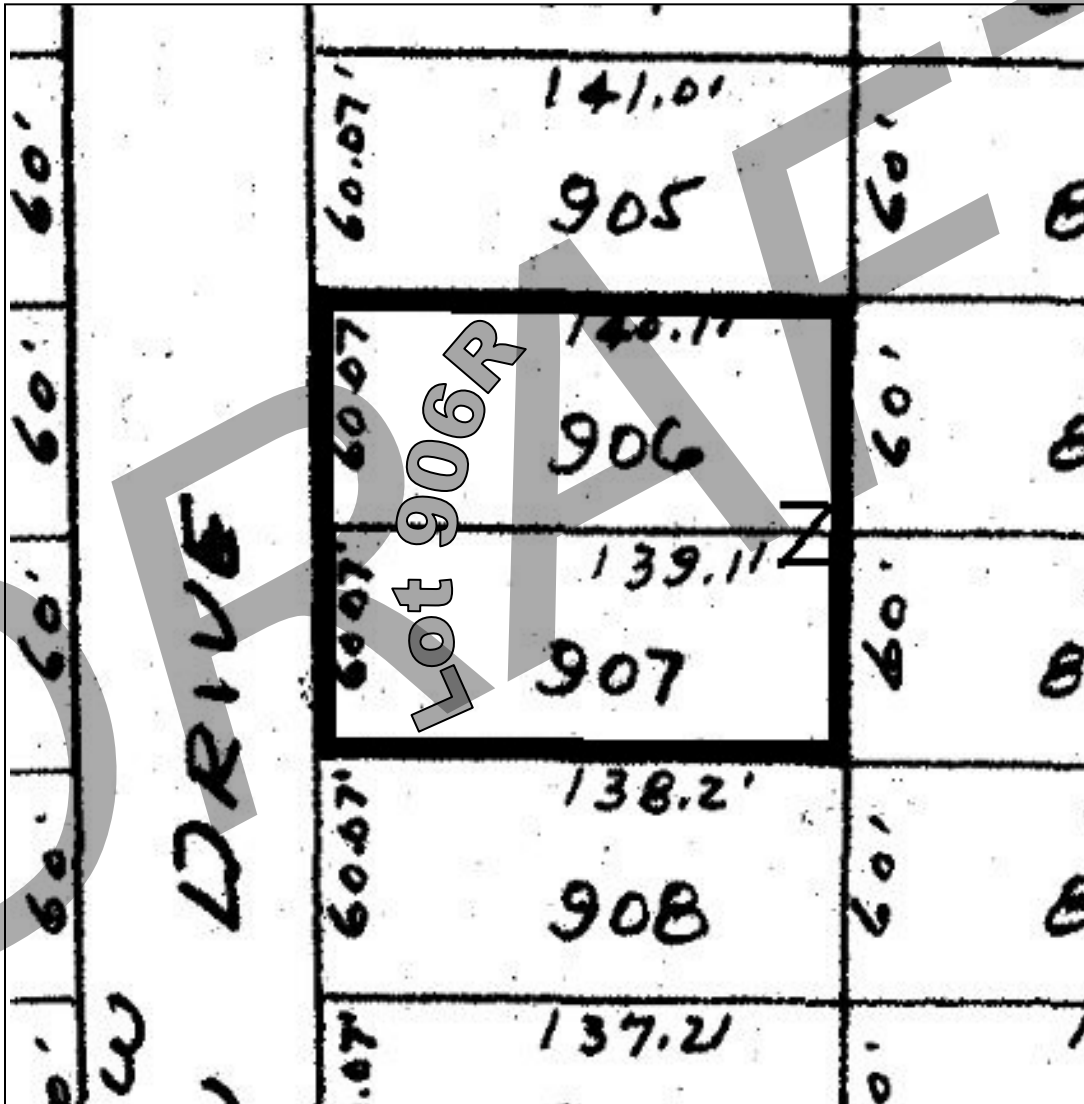
# Amendment to Plat

## CANYON LAKE FOREST, UNIT NO. 2

(Volume 1, Pages 73-74, Map and Plat Records, Comal County, Texas)

### Combining Lots 906 and 907

### Establishing Lot 906R



Please refer to the recorded subdivision plat, *Canyon Lake Forest, Unit No. 2* (Volume 1, Pages 73-74, Map and Plat Records, Comal County, Texas), for original lot dimensions and further information.

EXHIBIT - NOT FOR RECORDING



