

WESTBROOK ENGINEERING, LLC
5300 Central Pkwy North
San Antonio, TX 78232
(210) 545-1122



JAMES E. BRADFORD
Professional Engineer
No. 25628
State of Texas

WESTBROOK ENGINEERING JOB NO:
S103-11
11-16-11
AG
DRAWING DATE:
BR:

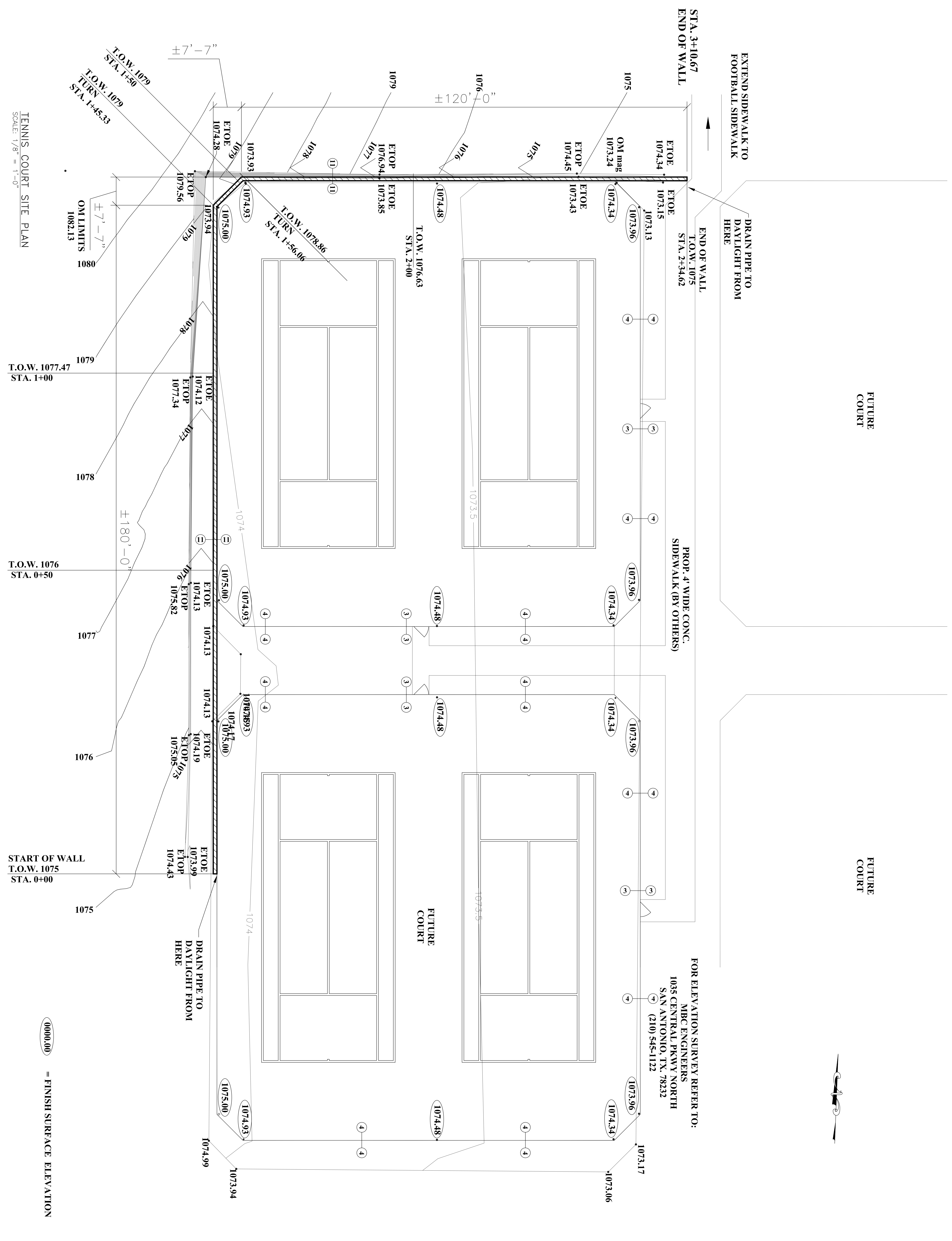
TENNIS COURT DESIGNS JUMBO EVANS SPORTS COMPLEX GRADING AND ELEVATION PLAN

REVISIONS	
DATE	REVISION
DATE	REVISION
DATE	REVISION
DATE	REVISION
DATE	REVISION
DATE	REVISION

DATE	REVISION	BR
DATE	REVISION	BR
DATE	REVISION	BR
DATE	REVISION	BR
DATE	REVISION	BR
DATE	REVISION	BR
DATE	REVISION	BR
DATE	REVISION	BR
DATE	REVISION	BR
DATE	REVISION	BR
DATE	REVISION	BR
DATE	REVISION	BR
DATE	REVISION	BR
DATE	REVISION	BR

ADDRESS:
LOT BLOCK N.C.B.
SUBDIVISION
SPRING BRANCH, COMAL
CITY, COUNTY

SHEET NO.
S-1 of 7



TENNIS COURT SITE PLAN
SCALE: 1/8" = 1'-0"

DRAWING/SPECIFICATIONS ARE COPYRIGHTED BY WESTBROOK ENGINEERING AND MAY NOT BE USED ON ANY OTHER PROJECT FOR ANY OTHER PURPOSE WITHOUT THE EXPRESS WRITTEN PERMISSION OF WESTBROOK ENGINEERING, LLC © 2011/2012/2013

ALL DIMENSIONS, LOCATIONS AND ELEVATIONS ARE TO BE VERIFIED

0000.00 = FINISH SURFACE ELEVATION

FOR ELEVATION SURVEY REFER TO:
MBC ENGINEERS
1035 CENTRAL PKWY NORTH
SAN ANTONIO, TX 78232
(210) 545-1122