



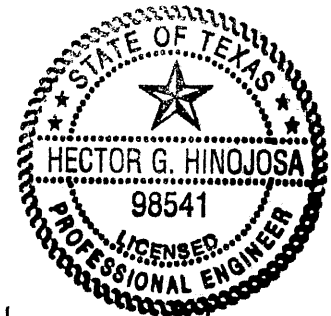
OFFICE OF COUNTY PURCHASING

August 28, 2014

**BID 2014-420
TENNIS COURT LIGHTING AT SPRING BRANCH TENNIS CENTER
ADDENDUM NO. 2**

The following clarifications, corrections, additions, deletions, revisions, modifications and/or changes shall be made to **COMAL COUNTY BID #2014-420 TENNIS COURT LIGHTING AT SPRING BRANCH TENNIS CENTER** and considered hereinafter to be part of the contract documents.

1. Added detail for light pole bases at (4) locations adjacent to existing retaining wall. Refer to attached light pole detail.
2. Contractor shall provide direct burial galvanized steel pole with overall length of 28ft at each of four pole locations. Refer to attached revised sheet E2.
3. Contractor shall provide a 3"x6" oval hand-hole in each of the (4) poles at minimum of 12" above pole base. Refer to attached light pole detail.
4. Contractor shall provide opening for conduit in each of the (4) poles. Refer to attached light pole detail.
5. Relocated riser pole, service equipment rack, and underground feeders to temporary building as shown. Refer to attached revised sheet E2.



Hector G. Hinojosa
8-28-14

A signed copy of this Addendum must be included with the Bid response.

Addendum No. 2 Acknowledged by:

Name

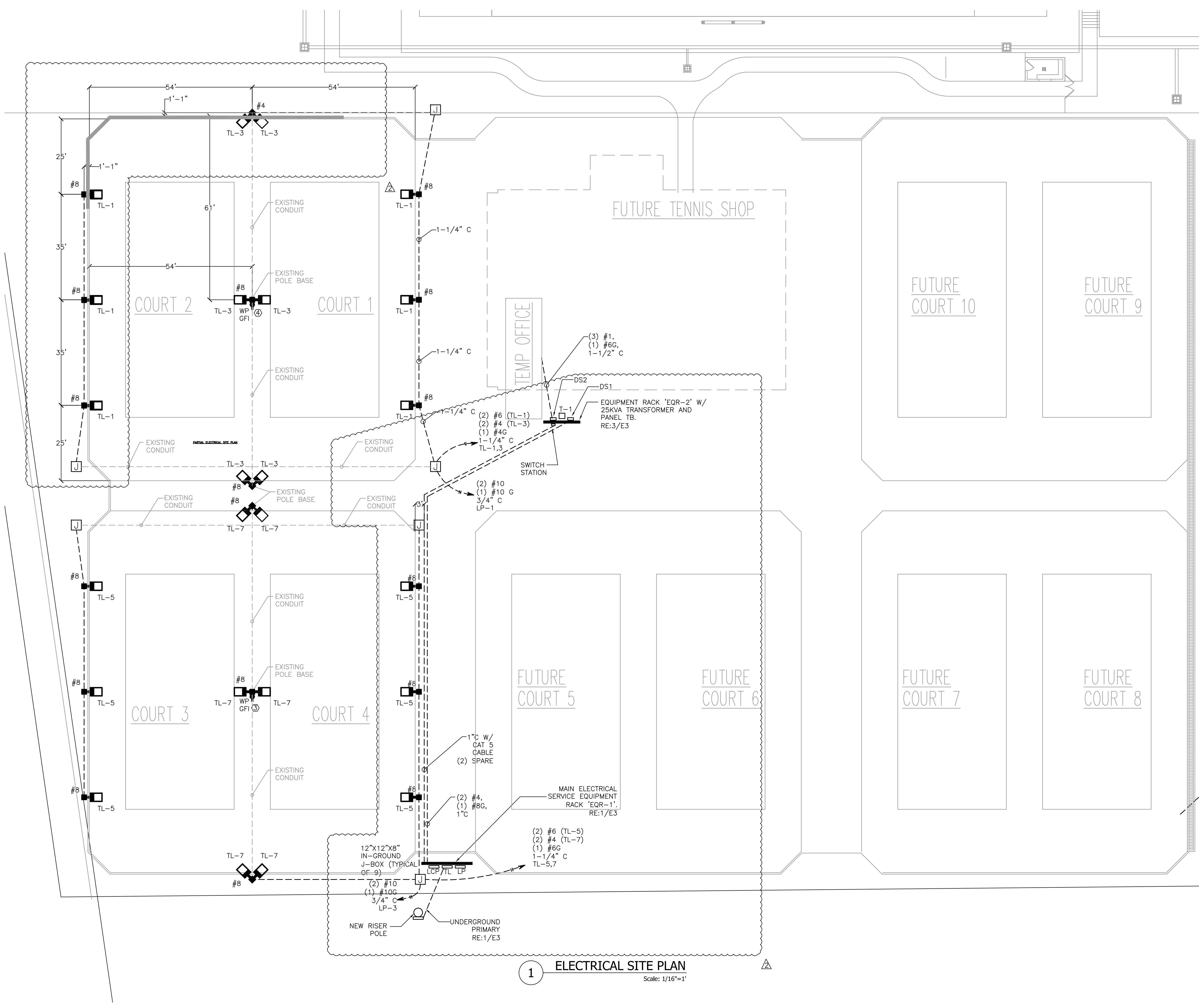
Date

Company

Date: Aug 28, 2014, 10:15am User: B. Meuth File: K:\MEP\2514CMALC\01 - Spring Branch Tennis Center\DWG\2514-CMALC-01-MEP-001.dwg

ADD.	DESCRIPTION:
△	1. ADDENDUM #2

REVISIONS:
ADD #2 8-28-14



GENERAL ELECTRICAL NOTES

- ALL CONDUITS INSTALLED UNDERGROUND SHALL BE MINIMUM SIZE OF 1" UNLESS OTHERWISE NOTED.
- ALL WIRE FOR UNDERGROUND INSTALLATION SHALL BE TYPE THWN-2 COPPER CONDUCTORS.
- ALL CONDUIT INSTALLED UNDERGROUND SHALL BE TYPE SCHEDULES 40 PVC UNLESS OTHERWISE NOTED.
- SIZE OF BRANCH CIRCUIT CONDUCTORS IS SHOWN ON SITE PLAN AT EACH POLE LIGHT LOCATION. BRANCH CIRCUIT CONDUCTORS SIZED TO KEEP VOLTAGE DROP VALUES AT OR BELOW ACCEPTABLE MAXIMUM LEVELS.
- ALL METAL LIGHTS POLES SHALL BE BONDED TO GROUND WITH AN EQUIPMENT GROUNDING CONDUCTOR SIZED NOT SMALLER THAN THE LARGEST BRANCH CIRCUIT CONDUCTOR ENCLOSED WITHIN THE SAME LIGHT POLE.
- PROVIDE MINIMUM COVER AS REQUIRED BY NEC FOR ALL UNDERGROUND CONDUIT UNLESS OTHERWISE NOTED.
- FOR EACH PAIR OF COURTS PROVIDE (6) CXLS-A ASSEMBLIES, (1) CXLS-B ASSEMBLIES, AND (2) CXLS-C ASSEMBLIES. ALL LUMINARIES MANUFACTURED BY LSI INDUSTRIES, CONTRACTOR TO VERIFY FIXTURE SPECIFICATION WITH OWNER.

KEYED NOTES

- PROVIDE EMPTY CONDUITS TO BE USED AS PATHWAYS FOR FEEDERS SUPPLYING POWER TO FUTURE PRO SHOP BUILDING. PROVIDE PULL STRING IN CONDUITS, CAPS, AND MARK LOCATION TO FACILITATE DISCOVERY AND UNEARTHING AT SOME TIME IN THE FUTURE.
- PROVIDE WITH CAT5 CONTROL CABLE RUNNING FROM LIGHTING CONTROL PANEL TO SWITCH STATION LOCATION. REFER TO LIGHTING CONTROL WIRING DIAGRAM.
- RUN CKT LP-3 TO POLE MOUNTED RECEPTACLE WITH CKT FEEDING POLE LIGHT.
- RUN CKT LP-1 TO POLE MOUNTED RECEPTACLE WITH CKT FEEDING POLE LIGHT.

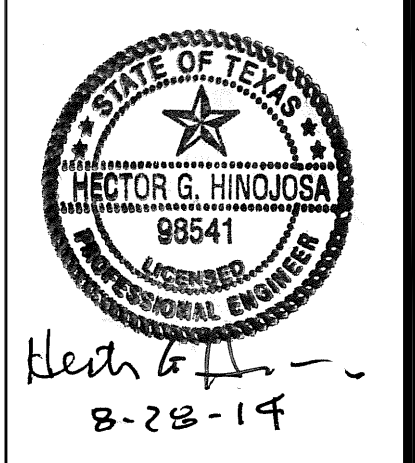
SYMBOL LEGEND:

	20 AMP DUPLEX GROUND FAULT CIRCUIT INTERRUPTER. FOR OUTDOOR INSTALLATION, PLACE IN WATERPROOF HOUSING WHEN MARKED WITH "WP".
	NON-FUSED DISCONNECT SWITCH.
	LIGHTS AT TENNIS COURTS
	PANEL BOARD
	JUNCTION BOX: E.C. TO DETERMINE PHYSICAL SIZE
	HOMERUN
	CONDUIT RUN EXPOSED OR HIDDEN ABOVE GROUND
	CONDUIT RUN IN/UNDER SLAB OR UNDERGROUND

NOTE: ALL RECEPTACLE OUTLETS AT 18" A.F.F. EXCEPT AS NOTED PULL STRINGS IN ALL CONDUITS. ALL CONDUITS MUST BE LABELED INSIDE JBOX WITH NAME OF DESTINATION JBOX

1 ELECTRICAL SITE PLAN
Scale: 1/16"=1'

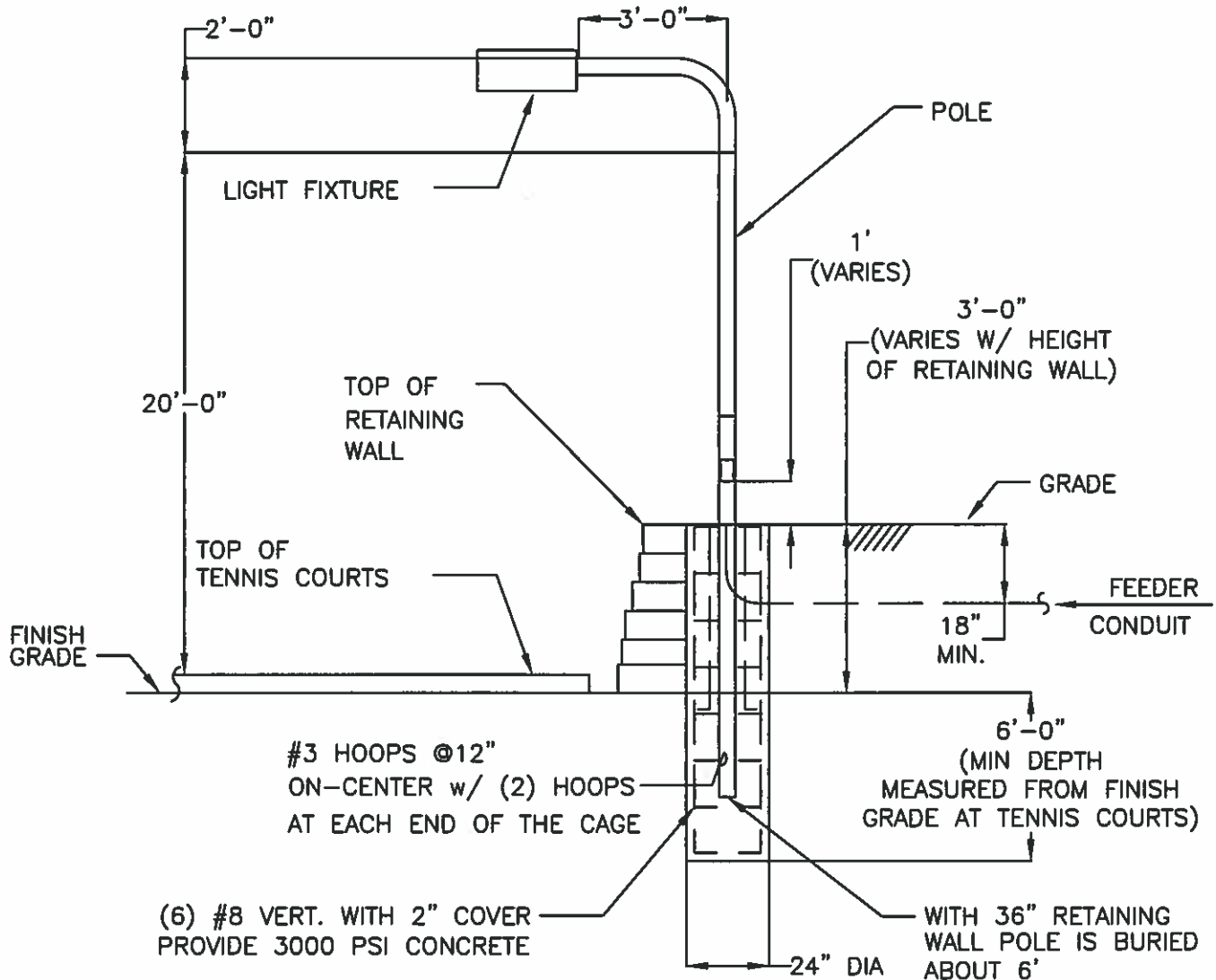
BRANCH OFFICE
 P.O. BOX 391
 McQUEENEY, TEXAS 78123
M & S
 MAIN OFFICE
 P.O. BOX 970
 SPRING BRANCH, TEXAS 78070
 PHONE # (830) 228-5446
 FAX # (830) 885-2170
ENGINEERING, L.L.C.
 ENGINEERS, PLANNERS AND SURVEYORS
 TEXAS REGISTERED ENGINEERING FIRM #1394



SPRING BRANCH TENNIS CENTER
 101 JUMBO EVANS BLVD
 CANYON LAKE, TX 78070
 ELECTRICAL PLAN

JOB: 2514CMALC.001
DATE: JUNE 2014
SCALE: AS NOTED
ENG BY: B. MEUTH
CHK BY: T. SIMS
DWN BY: C. LEMAIRE
NOTES:

SHEET:
E2



LIGHT POLE DETAIL
 FOR RETAINING WALL CONFLICT TYPICAL OF 4'

E. Allen Dunn, III
 8/28/11

STATE OF TEXAS
 E. ALLEN DUNN, III
 90125
 PROFESSIONAL ENGINEER

MAIN OFFICE

P.O. BOX 970
 SPRING BRANCH, TEXAS 78070
 PHONE # (830) 228-5446
 FAX # (830) 885-2170

M & S



BRANCH OFFICE

P.O. BOX 391
 McQUEENEY, TEXAS 78123

ENGINEERING, L.L.C.

ENGINEERS, PLANNERS, AND SURVEYORS

TEXAS REGISTERED ENGINEERING FIRM F-1394