

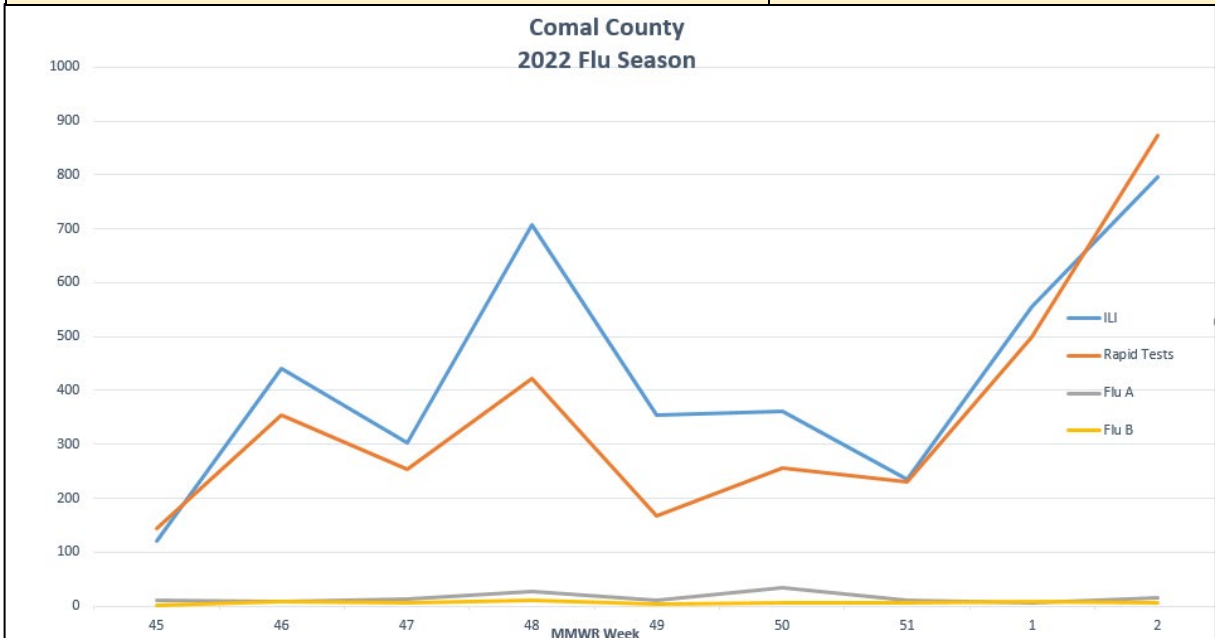


# COMAL COUNTY

## OFFICE OF PUBLIC HEALTH

MMWR Week 2  
January 9 - 15, 2022

Flu and Influenza-Like Illness in Clinical Setting	
Providers Surveyed	54
Providers Responding	7
Patients with Influenza-Like Illness	797
Flu Tests Conducted	873
Tests Positive for Flu A	15
Tests Positive for Flu B	5
Tests Positive for Flu, Non-differentiated	0
Outbreaks Reported	0



Because individual cases of influenza and influenza-like illness are not reportable by law, Comal County Public Health relies on providers and schools who voluntarily report flu and influenza-like illness activity.

Influenza-like Illness (ILI) Case Definition  
Fever ( $\geq 100^\circ$  F [ $37.8^\circ$  C], oral or equivalent) **and**  
Cough and/or sore throat

