



COMAL COUNTY

OFFICE OF PUBLIC HEALTH

MMWR Week 51, December 18 - 24, 2022 Flu and Influenza-Like Illness in Clinical Setting	
Providers Surveyed	57
Providers Responding	7
Patients with Influenza-Like Illness	258
Flu Tests Conducted	269
Tests Positive for Flu A	28
Tests Positive for Flu B	0
Tests Positive for Flu, Non-differentiated	0
Outbreaks Reported	0

State-wide Flu Surveillance Data, provided by Texas Department of State Health Services Percentage of Visits Due to Influenza-like Illness Reported by Texas ILINet Participants, 2019–2023 Seasons

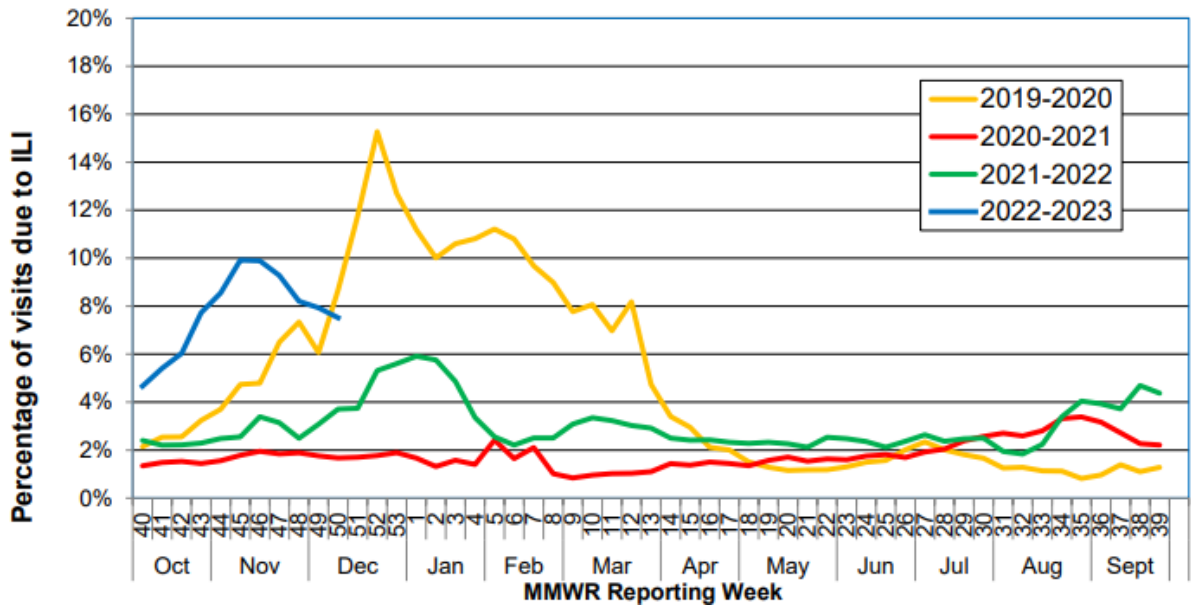


Table 10: Influenza-Associated Pediatric Deaths Reported in Texas during the 2022-2023 Season

Month of Pediatric Death	Influenza A (H1N1)	Influenza A (H3N2)	Influenza A (Not Subtyped)	Influenza B	Influenza, Not Typed / Not Differentiated	Influenza virus co-infection: A (not subtyped) and B	Total, All Influenza Types / Subtypes
2022							
October	0	2	0	1	0	0	3
November	0	2	0	0	0	0	2
December	0	1	1	0	0	0	2
Total*	0	5	1	1	0	0	7

*Total count of typed cases may be adjusted as lab testing and case investigation is completed.