



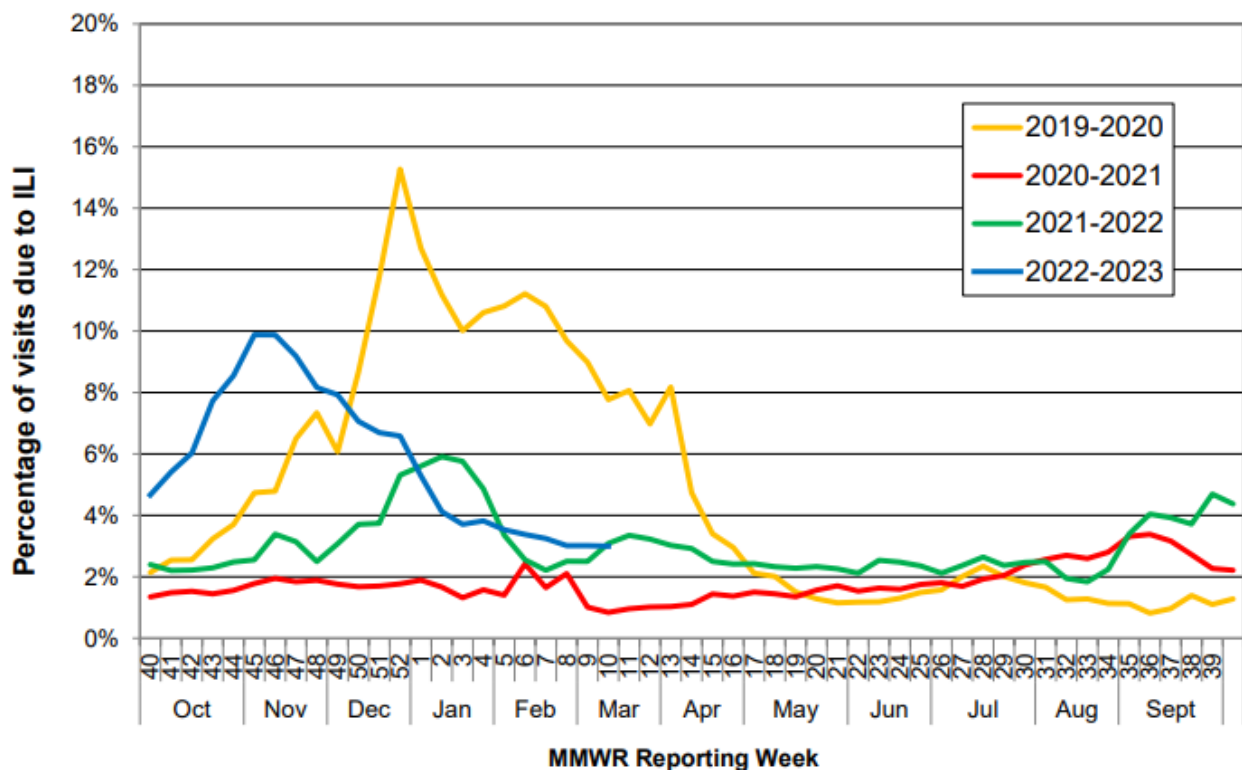
# COMAL COUNTY

## OFFICE OF PUBLIC HEALTH

MMWR Week 11, March 12 - 18, 2023 Flu and Influenza-Like Illness in Clinical Setting	
Providers Surveyed	53
Providers Responding	3
Patients with Influenza-Like Illness	23
Flu Tests Conducted	26
Tests Positive for Flu A	0
Tests Positive for Flu B	4

### State-wide Flu Surveillance Data, provided by Texas Department of State Health Services

Percentage of Visits Due to Influenza-like Illness Reported by Texas ILINet Participants, 2019–2023 Seasons



For more information on influenza, visit [www.texasflu.org](http://www.texasflu.org)