



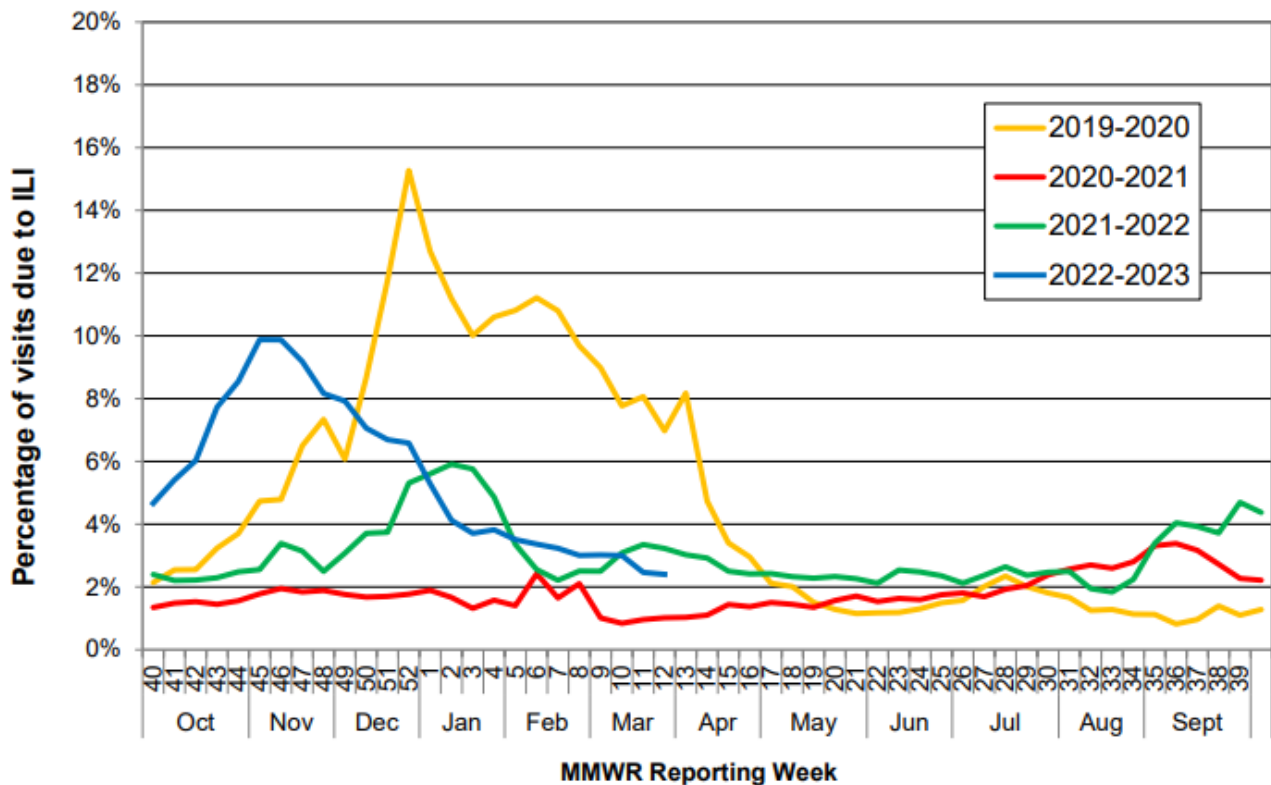
# COMAL COUNTY

## OFFICE OF PUBLIC HEALTH

| MMWR Week 13, March 26 – April 1, 2023<br>Flu and Influenza-Like Illness in Clinical Setting |     |
|--|-----|
| Providers Surveyed   | 53  |
| Providers Responding   | 4   |
| Patients with Influenza-Like Illness   | 139 |
| Flu Tests Conducted  | 164 |
| Tests Positive for Flu A   | 0   |
| Tests Positive for Flu B   | 3   |

### State-wide Flu Surveillance Data, provided by Texas Department of State Health Services

Percentage of Visits Due to Influenza-like Illness Reported by Texas ILINet Participants, 2019–2023 Seasons



For more information on influenza, visit [www.texasflu.org](http://www.texasflu.org)