



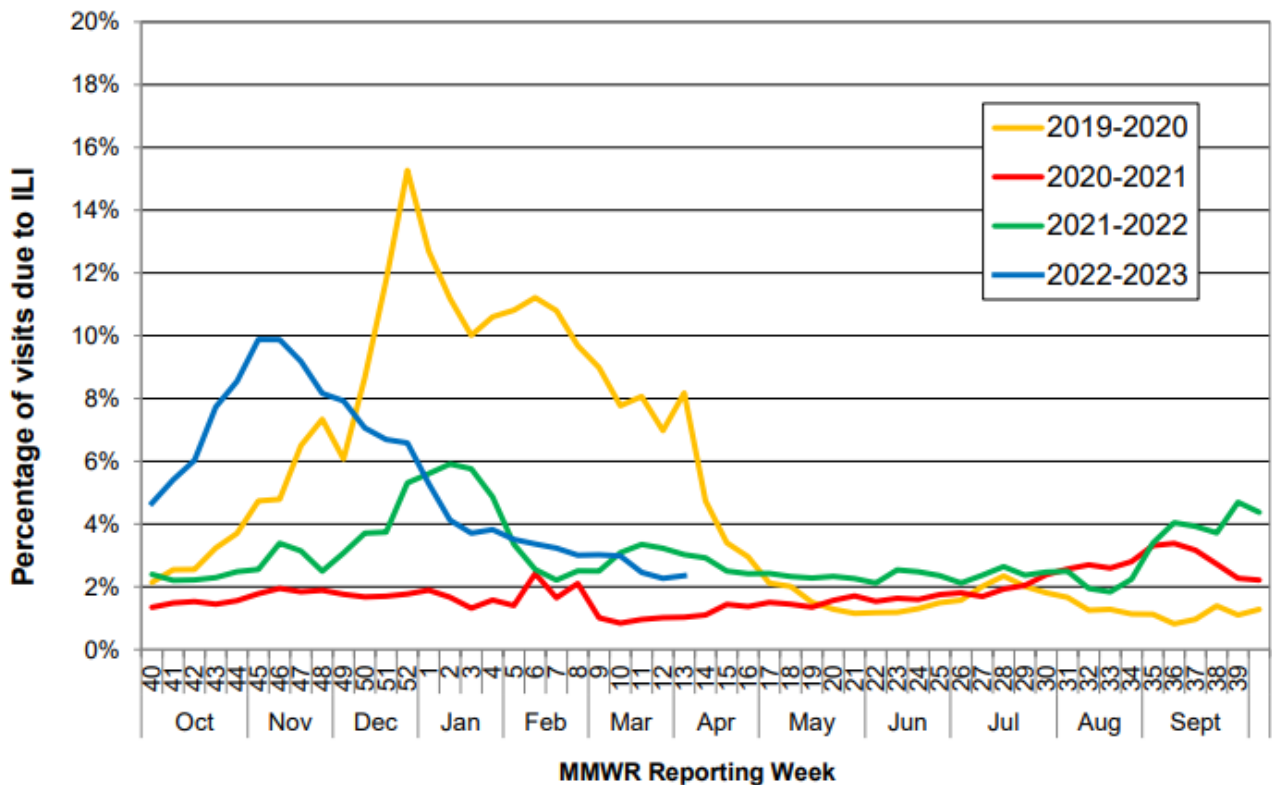
COMAL COUNTY

OFFICE OF PUBLIC HEALTH

MMWR Week 14, April 2 - 8, 2023	
Flu and Influenza-Like Illness in Clinical Setting	
Providers Surveyed	53
Providers Responding	3
Patients with Influenza-Like Illness	16
Flu Tests Conducted	17
Tests Positive for Flu A	1
Tests Positive for Flu B	0

State-wide Flu Surveillance Data, provided by Texas Department of State Health Services

Percentage of Visits Due to Influenza-like Illness Reported by Texas ILINet Participants, 2019–2023 Seasons



For more information on influenza, visit www.texasflu.org