



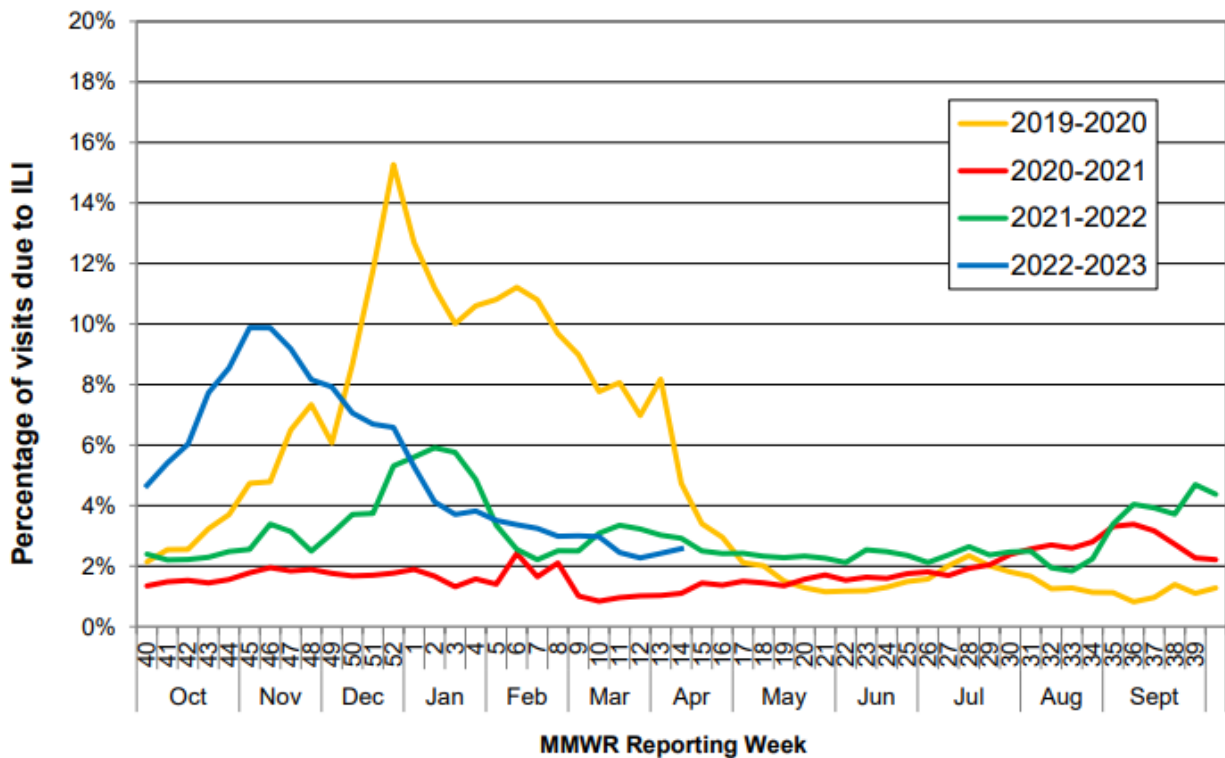
COMAL COUNTY

OFFICE OF PUBLIC HEALTH

MMWR Week 15, April 9 - 15, 2023	
Flu and Influenza-Like Illness in Clinical Setting	
Providers Surveyed	53
Providers Responding	4
Patients with Influenza-Like Illness	170
Flu Tests Conducted	178
Tests Positive for Flu A	2
Tests Positive for Flu B	4

State-wide Flu Surveillance Data, provided by Texas Department of State Health Services

Percentage of Visits Due to Influenza-like Illness Reported by Texas ILINet Participants, 2019–2023 Seasons



For more information on influenza, visit www.texasflu.org