



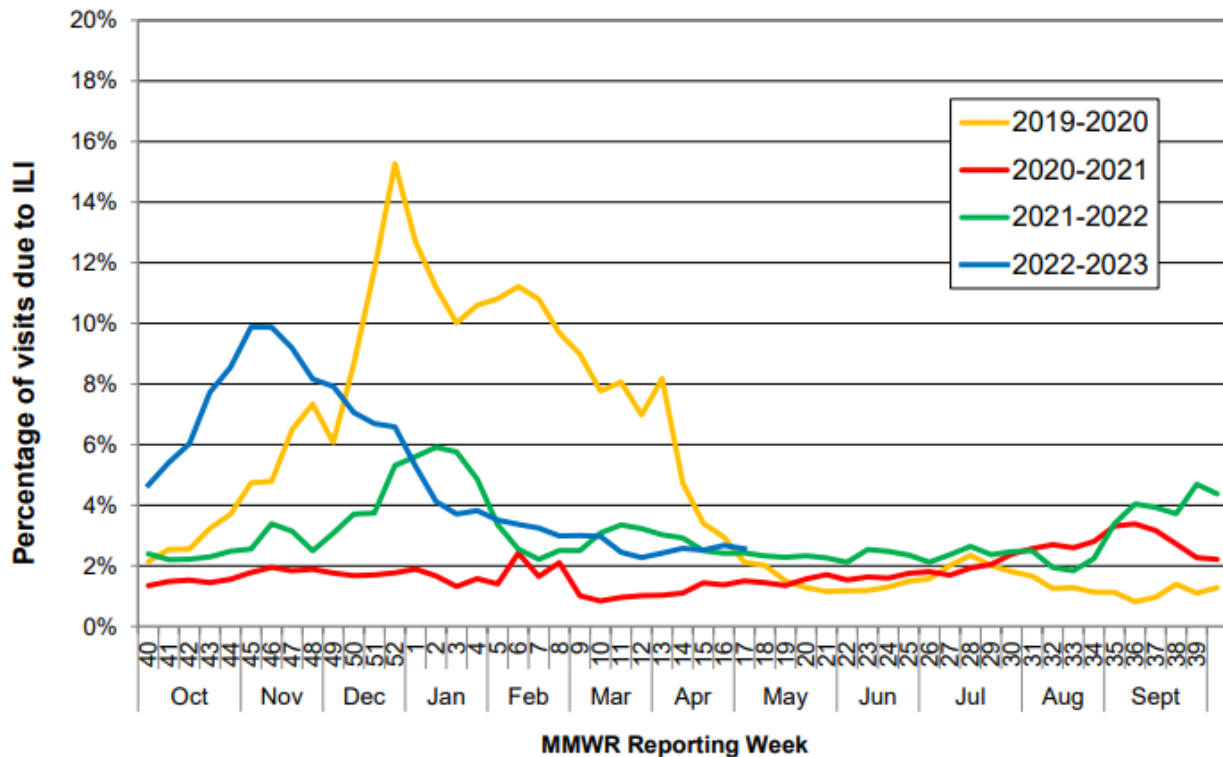
COMAL COUNTY

OFFICE OF PUBLIC HEALTH

MMWR Week 18, April 30 – May 6, 2023 Flu and Influenza-Like Illness in Clinical Setting	
Providers Surveyed	53
Providers Responding	4
Patients with Influenza-Like Illness	138
Flu Tests Conducted	151
Tests Positive for Flu A	1
Tests Positive for Flu B	5

State-wide Flu Surveillance Data, provided by Texas Department of State Health Services

Percentage of Visits Due to Influenza-like Illness Reported by Texas ILINet Participants, 2019–2023 Seasons



For more information on influenza, visit www.texasflu.org