



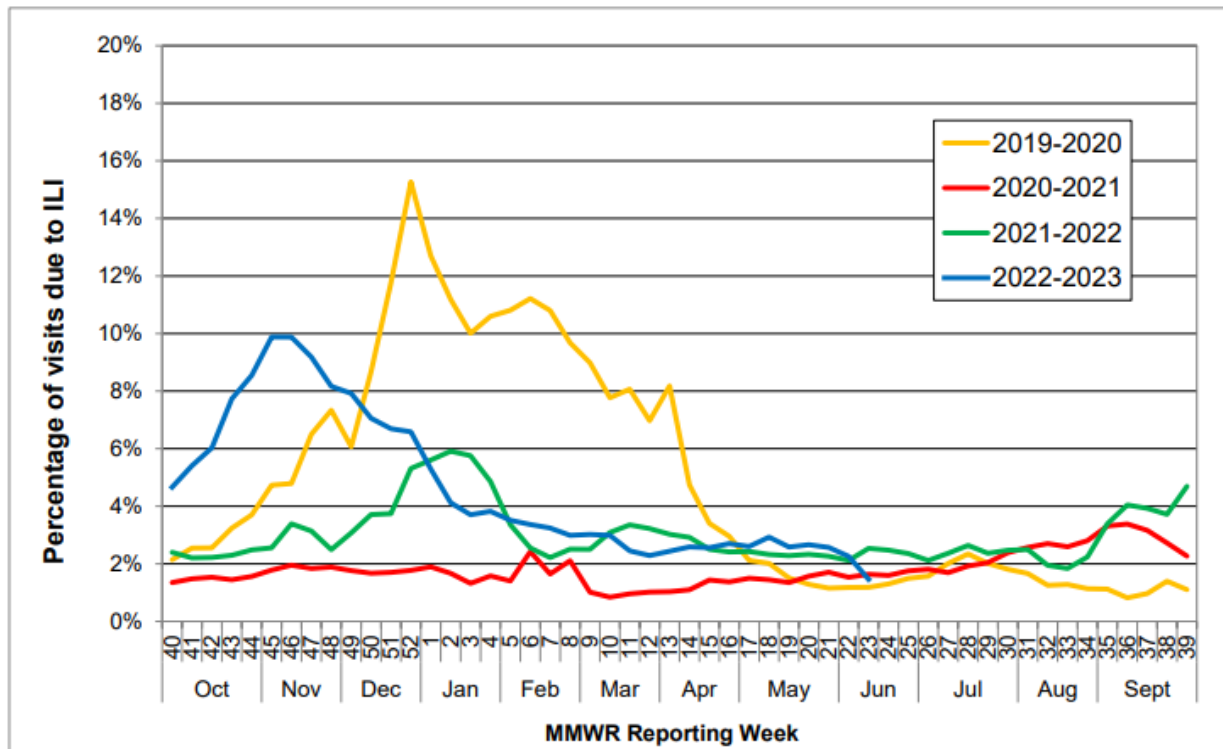
# COMAL COUNTY

## OFFICE OF PUBLIC HEALTH

Flu and Influenza-Like Illness in Clinical Setting MMWR Week 21, Week Ending 5/27/2023	
Providers Surveyed	53
Providers Responding	3
Patients with Influenza-Like Illness	37
Flu Tests Conducted	0
Tests Positive for Flu A	0
Tests Positive for Flu B	0

### State-wide Flu Surveillance Data, provided by Texas Department of State Health Services

Figure 4: Percentage of Visits Due to Influenza-like Illness Reported by Texas ILINet Participants, 2019–2023 Seasons



For more information on influenza, visit [www.texasflu.org](http://www.texasflu.org)