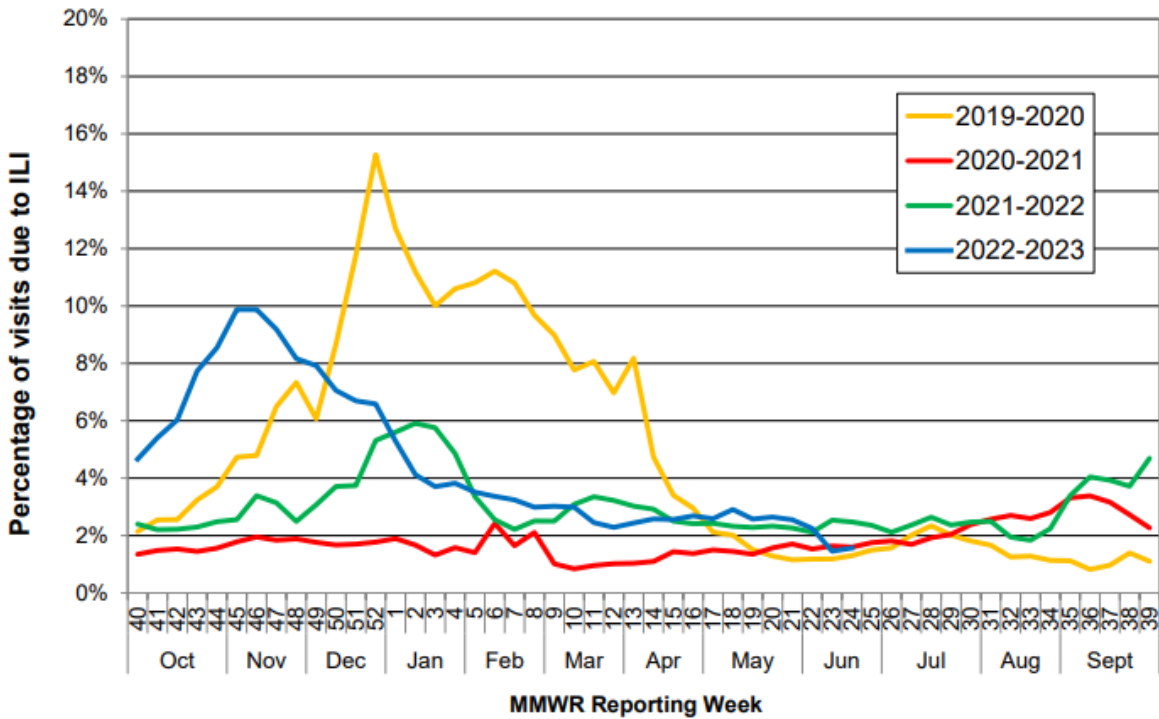




COMAL COUNTY
OFFICE OF PUBLIC HEALTH

Flu and Influenza-Like Illness in Clinical Setting MMWR Week 25, Week Ending 6/24/2023	
Providers Surveyed	53
Providers Responding	4
Patients with Influenza-Like Illness	30
Tests Positive for Flu A	0
Tests Positive for Flu B	0

State-wide Flu Surveillance Data, provided by Texas Department of State Health Services



For more information on influenza, visit www.texasflu.org