

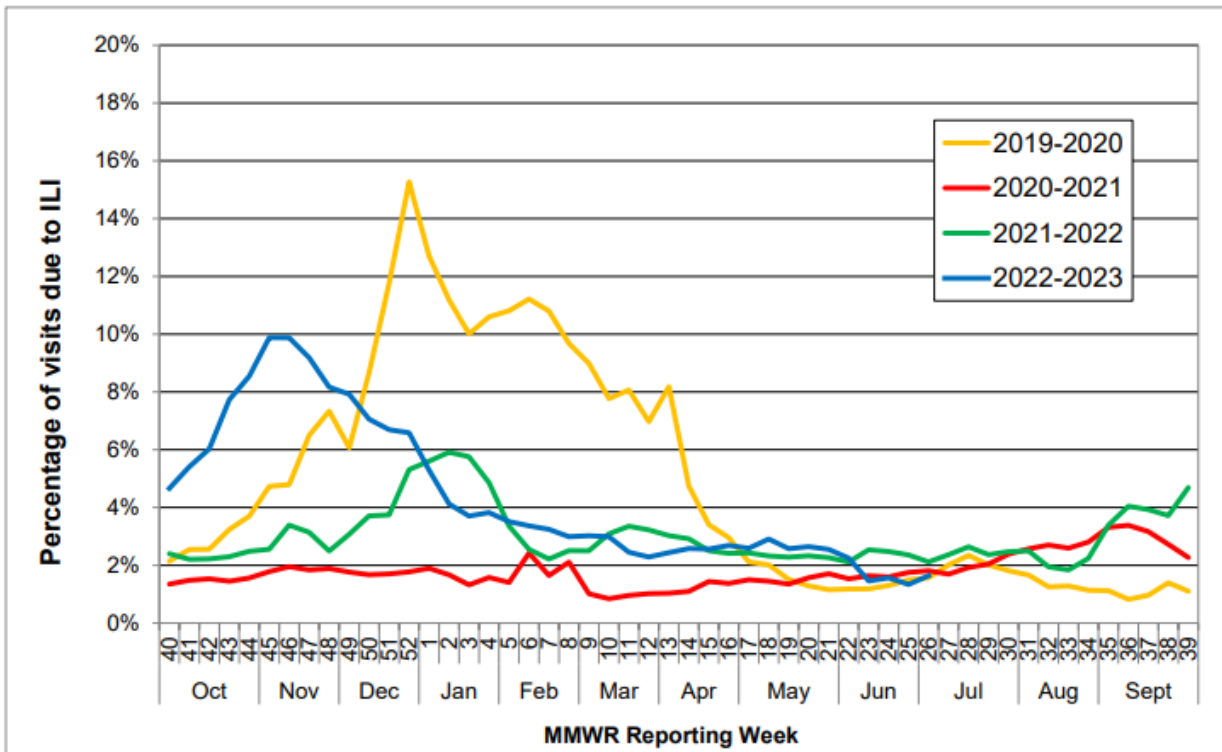


COMAL COUNTY

OFFICE OF PUBLIC HEALTH

Flu and Influenza-Like Illness in Clinical Setting MMWR Week 26, Week Ending 07/01/2023	
Providers Surveyed	54
Providers Responding	3
Patients with Influenza-Like Illness	28
Tests Positive for Flu A	2
Tests Positive for Flu B	2

State-wide Flu Surveillance Data, provided by Texas Department of State Health Services



For more information on influenza, visit www.texasflu.org