

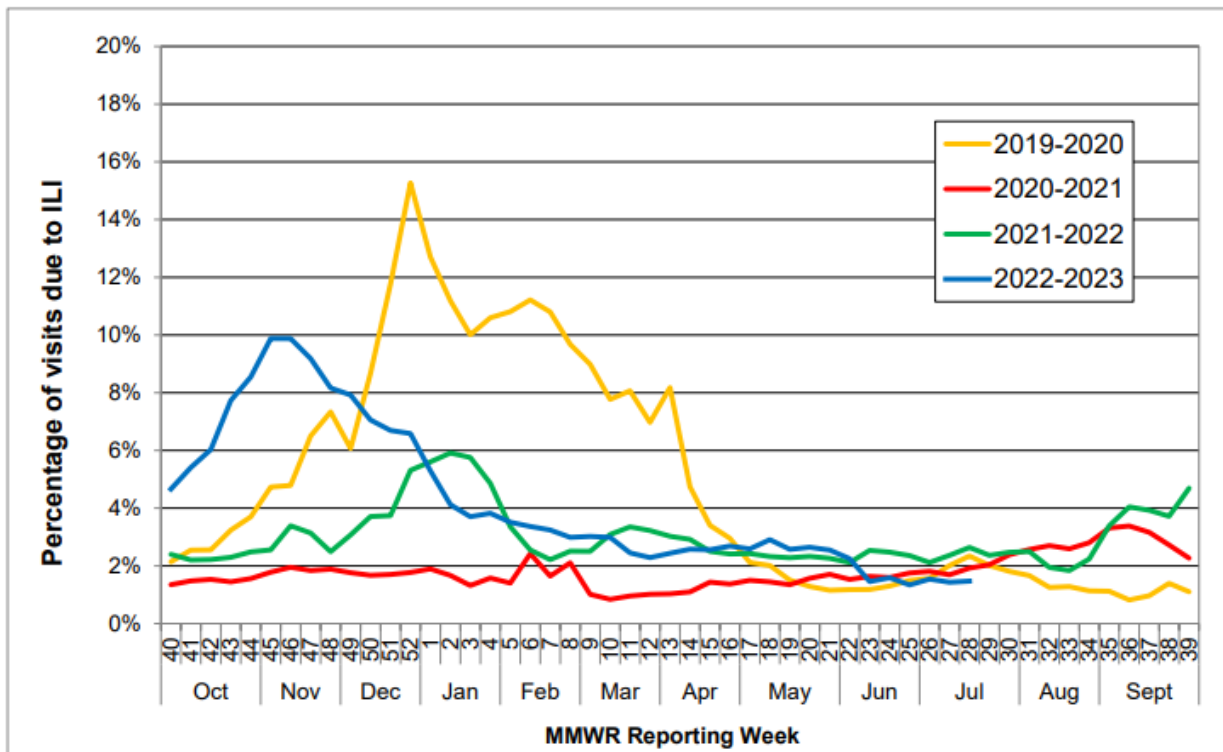


# COMAL COUNTY

OFFICE OF PUBLIC HEALTH

Flu and Influenza-Like Illness in Clinical Setting MMWR Week 28, Week Ending 07/15/2023	
Providers Surveyed	54
Providers Responding	4
Patients with Influenza-Like Illness	21
Tests Positive for Flu A	1
Tests Positive for Flu B	1

State-wide Flu Surveillance Data, provided by Texas Department of State Health Services



For more information on influenza, visit [www.texasflu.org](http://www.texasflu.org)