

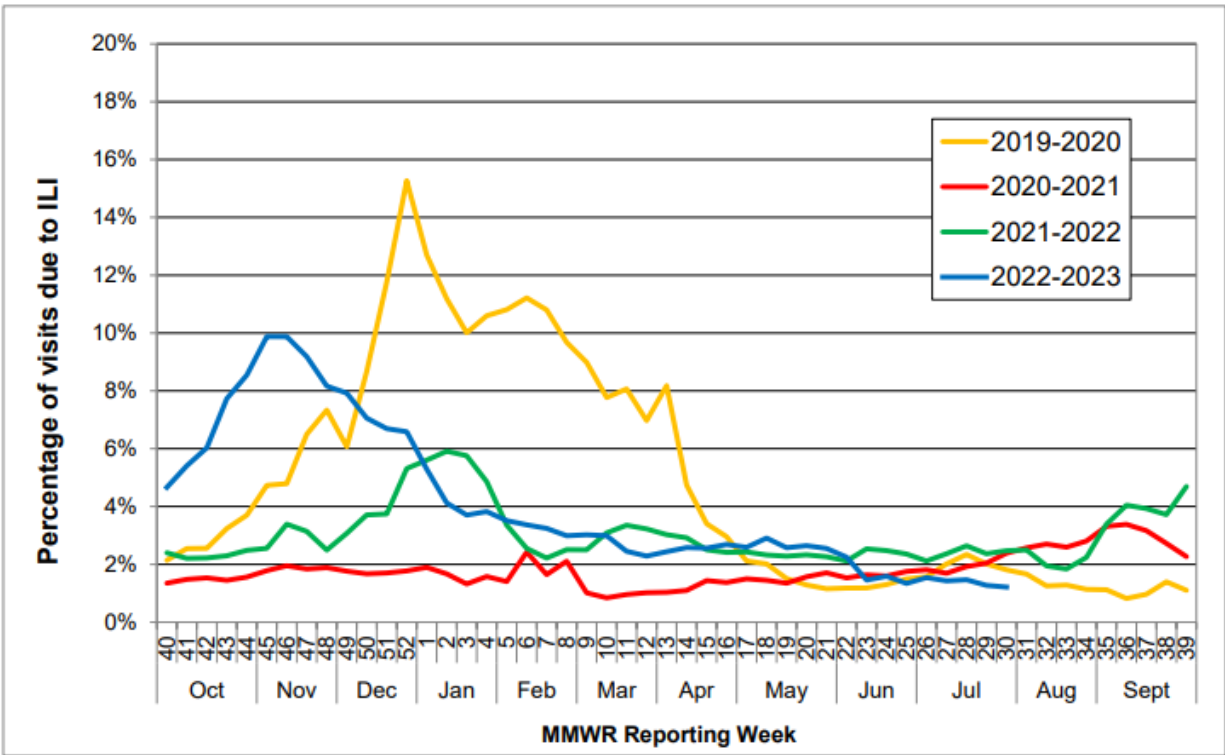


COMAL COUNTY

OFFICE OF PUBLIC HEALTH

Flu and Influenza-Like Illness in Clinical Setting MMWR Week 29, Week Ending 07/22/2023	
Providers Surveyed	54
Providers Responding	1
Patients with Influenza-Like Illness	33
Tests Positive for Flu A	0
Tests Positive for Flu B	3

State-wide Flu Surveillance Data, provided by Texas Department of State Health Services



For more information on influenza, visit www.texasflu.org