

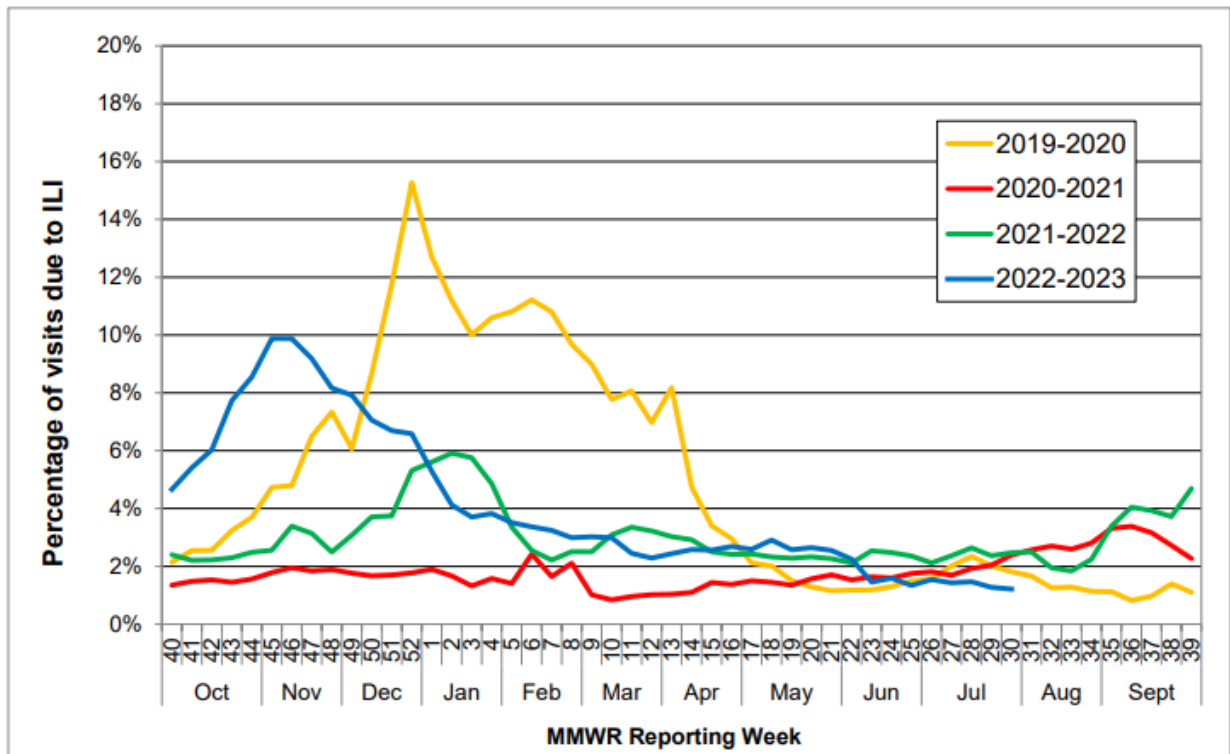


# COMAL COUNTY

## OFFICE OF PUBLIC HEALTH

Flu and Influenza-Like Illness in Clinical Setting MMWR Week 30, Week Ending 07/29/2023	
Providers Surveyed	54
Providers Responding	4
Patients with Influenza-Like Illness	45
Tests Positive for Flu A	0
Tests Positive for Flu B	2

State-wide Flu Surveillance Data, provided by Texas Department of State Health Services



For more information on influenza, visit [www.texasflu.org](http://www.texasflu.org)