

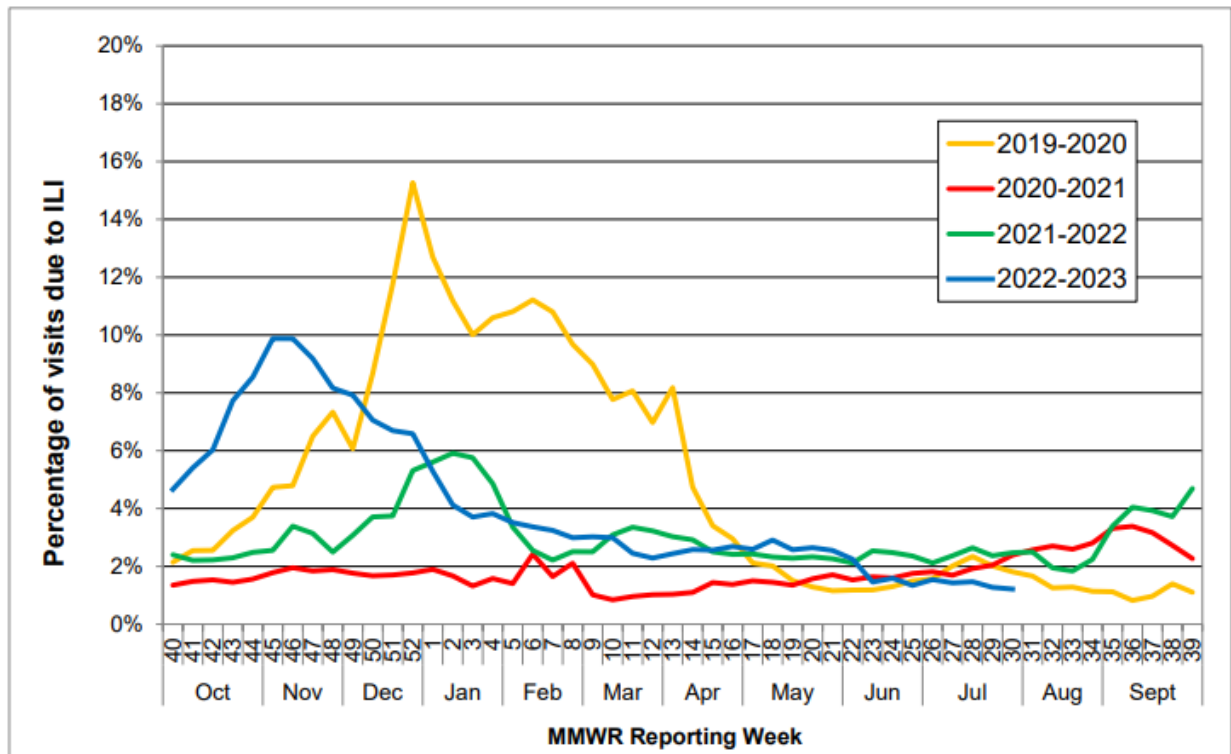


COMAL COUNTY

OFFICE OF PUBLIC HEALTH

Flu and Influenza-Like Illness in Clinical Setting MMWR Week 31, Week Ending 08/05/2023	
Providers Surveyed	53
Providers Responding	7
Patients with Influenza-Like Illness	34
Tests Positive for Flu A	2
Tests Positive for Flu B	2

State-wide Flu Surveillance Data, provided by Texas Department of State Health Services



For more information on influenza, visit www.texasflu.org