

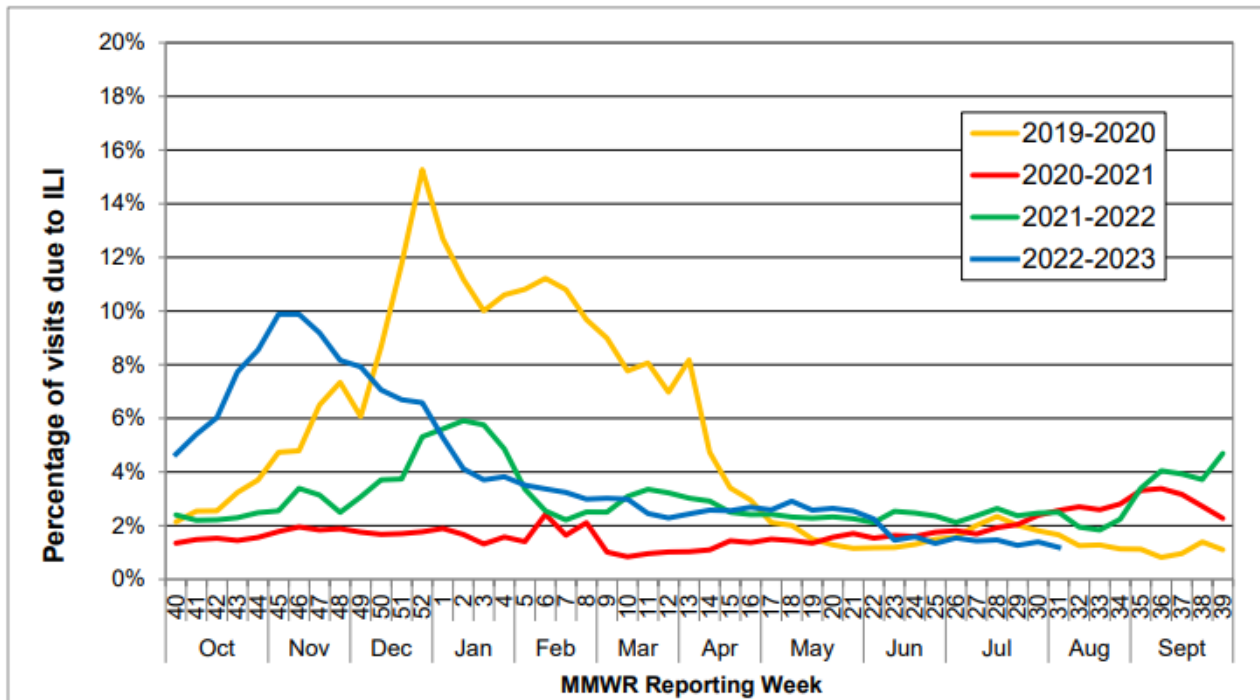


COMAL COUNTY

OFFICE OF PUBLIC HEALTH

Flu and Influenza-Like Illness in Clinical Setting MMWR Week 32, Week Ending 08/12/2023	
Providers Surveyed	47
Providers Responding	7
Patients with Influenza-Like Illness	62
Tests Positive for Flu A	2
Tests Positive for Flu B	3

State-wide Flu Surveillance Data, provided by Texas Department of State Health Services



The CDC recommends that everyone six months of age and older get the flu vaccine every season.