

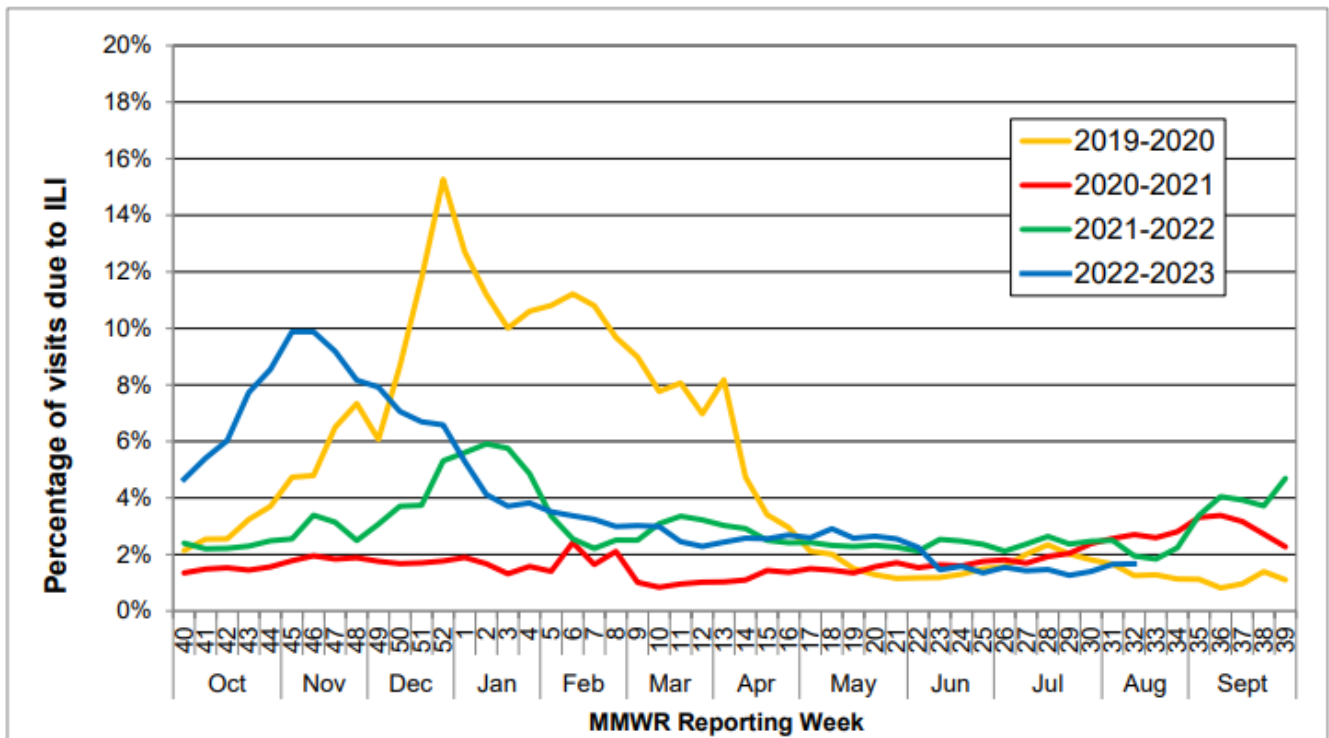


COMAL COUNTY

OFFICE OF PUBLIC HEALTH

Flu and Influenza-Like Illness in Clinical Setting MMWR Week 33, Week Ending 08/12/2023	
Providers Surveyed	58
Providers Responding	9
Patients with Influenza-Like Illness	52
Tests Positive for Flu A	5
Tests Positive for Flu B	10

State-wide Flu Surveillance Data, provided by Texas Department of State Health Services



The CDC recommends that everyone six months of age and older get the flu vaccine every season.