



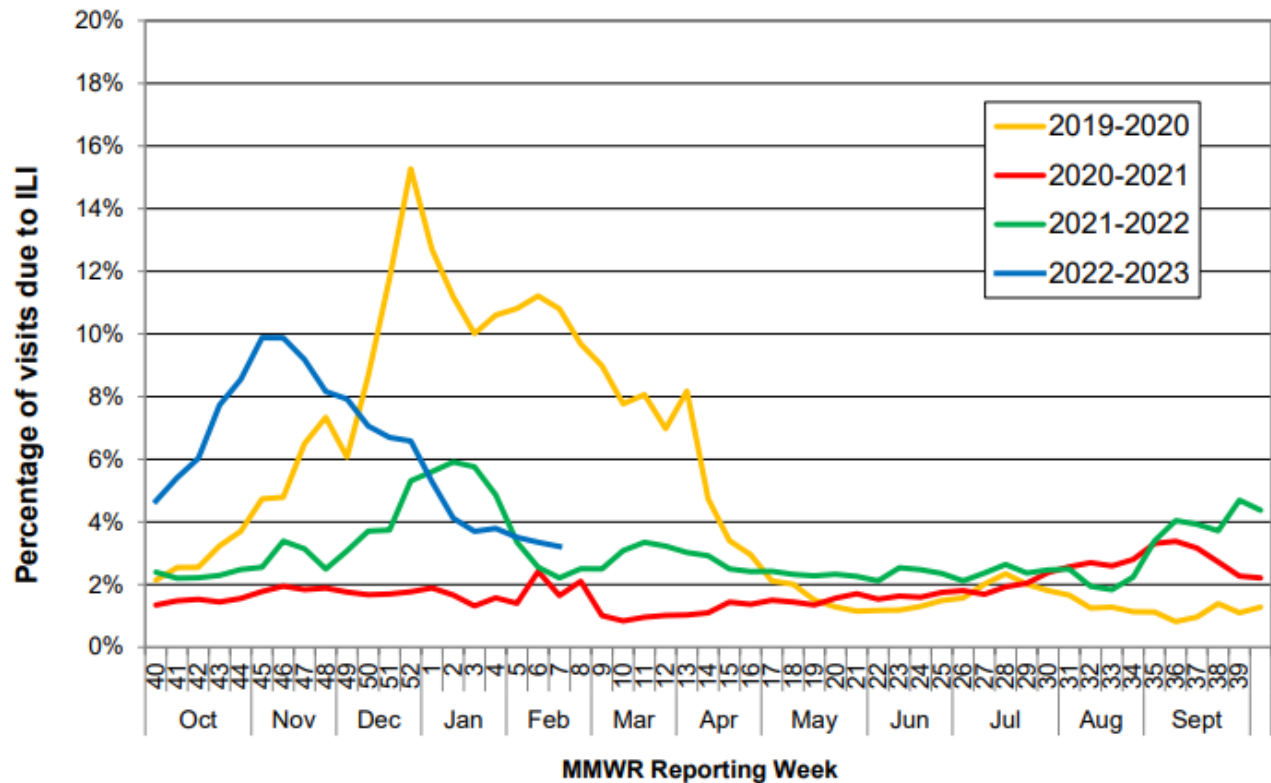
# COMAL COUNTY

## OFFICE OF PUBLIC HEALTH

| MMWR Week 7, February 12 - 18, 2023<br>Flu and Influenza-Like Illness in Clinical Setting |    |
|---|----|
| Providers Surveyed  | 53 |
| Providers Responding  | 7  |
| Patients with Influenza-Like Illness  | 60 |
| Flu Tests Conducted   | 65 |
| Tests Positive for Flu A  | 4  |
| Tests Positive for Flu B  | 4  |

### State-wide Flu Surveillance Data, provided by Texas Department of State Health Services

Percentage of Visits Due to Influenza-like Illness Reported by Texas ILINet Participants, 2019–2023 Seasons



For more information on influenza, visit [www.texasflu.org](http://www.texasflu.org)