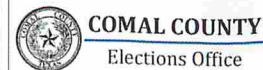


**NOTICE IS HEREBY GIVEN OF A BOUNDARY CHANGE IN  
COMAL COUNTY ELECTION PRECINCT 205**  
*(POR LA PRESENTE SE NOTIFICA UN CAMBIO DE LÍMITES EN EL PRECINTO  
ELECTORAL 205 DEL CONDADO DE COMAL)*

The boundary change will split Precinct 205 along Garden Ridge City Limits, centerlines of Cibolo Creek, Union Pacific Railroad Track1, Railroad Track 2, and FM 482. Precinct 210 will absorb the remainder of Precinct 205 along Garden Ridge City Limits, Centerlines of FM 3009, Cibolo Creek, Schoenthal Road and cross over centerline of Schoenthal Road and Willow Creek. Precincts 205 and 210 are reflected in the maps posted on the Comal County Elections website, [votecomal.com](http://votecomal.com), pursuant to an order of Comal County Commissioners Court on April 24, 2025, in accordance with Section 42.006 of the Election Code to become effective January 1, 2026. *(El cambio de límites dividirá el Precinto 205 a lo largo de los límites de la ciudad de Garden Ridge, los ejes de Cibolo Creek, la Vía 1 del Ferrocarril Union Pacific, la Vía 2 del Ferrocarril y la FM 482. El Precinto 210 absorberá el resto del Precinto 205 a lo largo de los límites de la ciudad de Garden Ridge, los ejes de FM 3009, Cibolo Creek, Schoenthal Road y el cruce de los ejes de Schoenthal Road y Willow Creek. Los Precintos 205 y 210 se reflejan en los mapas publicados en el sitio web de Elecciones del Condado de Comal, [votecomal.com](http://votecomal.com), de conformidad con una orden del Tribunal de Comisionados del Condado de Comal del 24 de abril de 2025, de conformidad con la Sección 42.006 del Código Electoral, que entrará en vigor el 1 de enero de 2026.)*

**SEE ATTACHMENTS**

# Voting Precinct 205

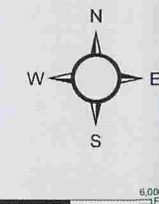


**COMAL COUNTY**  
Elections Office  
Comal County Elections Office  
396 N. Seguin Ave  
New Braunfels, Texas 78130  
Phone: 830-221-1352

Effective Date:  
January 1, 2024

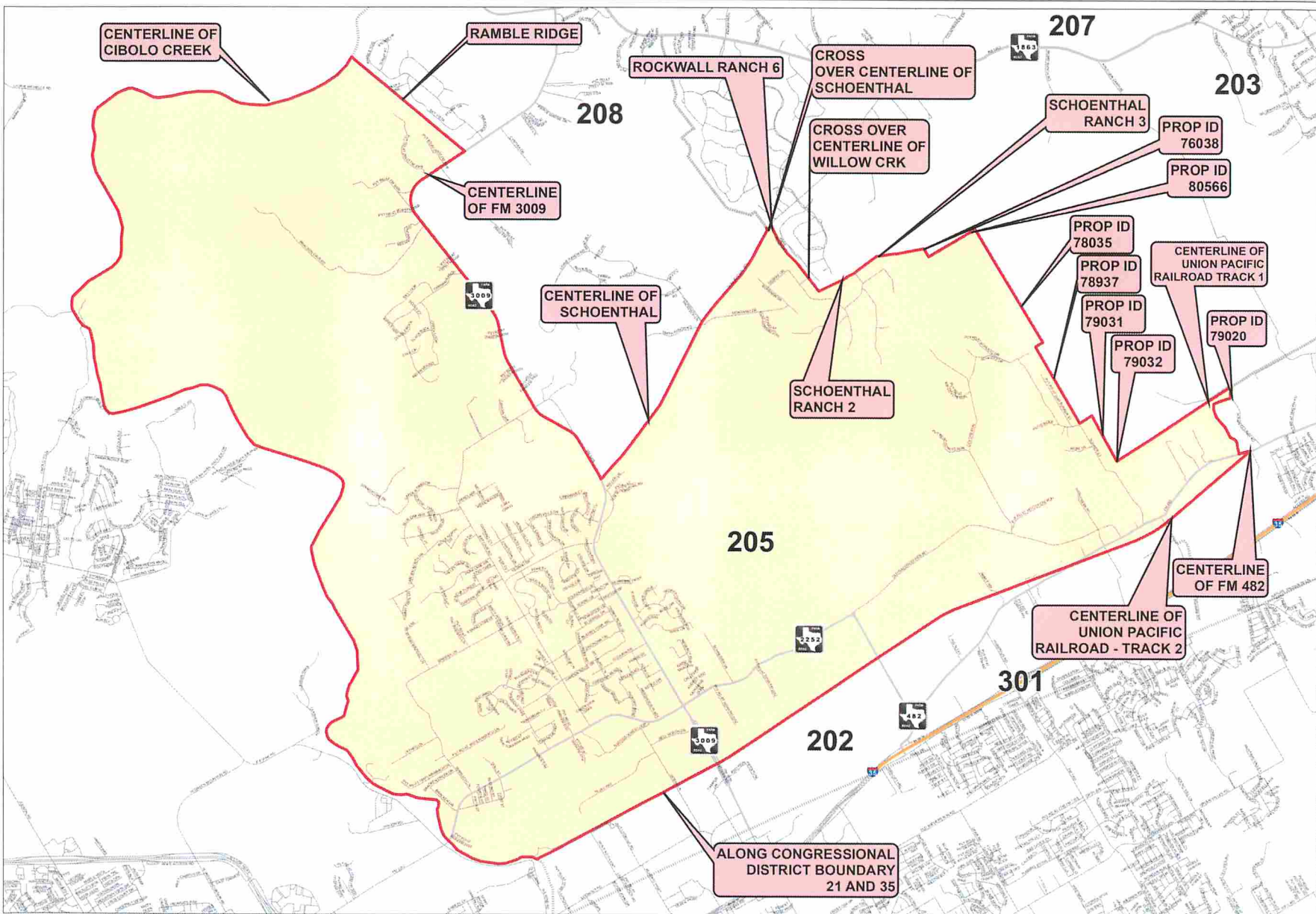
### Legend

- Precinct Boundary
- Voting Precincts
- Farm roads
- Highways
- Street Centerlines



Map Produced by:  
Comal County Engineer's Office  
150 David Jones Dr New Braunfels, TX 78132  
Map Approved by:  
Comal County Elections - Cynthia Jappa  
396 N. Seguin Ave New Braunfels, TX 78130

The information here provides a visual display of data for your convenience and is subject to these Terms of Use. The County of Comal has only attempted to assure the accuracy of this information for its internal uses and for no other purposes. Consequently, the County of Comal makes no warranty, representation of guaranty as to the content, sequence, accuracy, timeliness or completeness of all or any part of this document. The user of this document should not rely on the data provided herein for any reason unless and until the user independently verifies the accuracy of any such data to the user's personal satisfaction. The County of Comal explicitly disclaims any representations and warranties, including, without limitation, the implied warranties of merchantability and fitness for a particular purpose. The County of Comal shall assume no liability for any errors, omissions, lack of timeliness or inaccuracies in the document provided regardless of how caused. The County of Comal shall assume no liability for any decisions made or actions taken or not taken by the use of this document in reliance upon any information or data furnished hereunder. This product is for informational purposes and may not have been prepared for or be suitable for legal, engineering, or surveying purposes. It does not represent an on-the-ground survey and represents only the approximate relative location of property boundaries. The use of this document indicates your unconditional acceptance of these Terms of Use and your unconditional acceptance of all risks associated.



# Proposed Voting Precinct 205

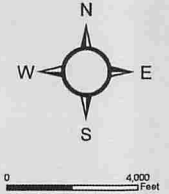


**COMAL COUNTY**  
Elections Office  
Comal County Elections Office  
396 N. Seguin Ave  
New Braunfels, Texas 78130  
Phone: 830-221-1352

**Effective Date:**  
January 1, 2026

### Legend

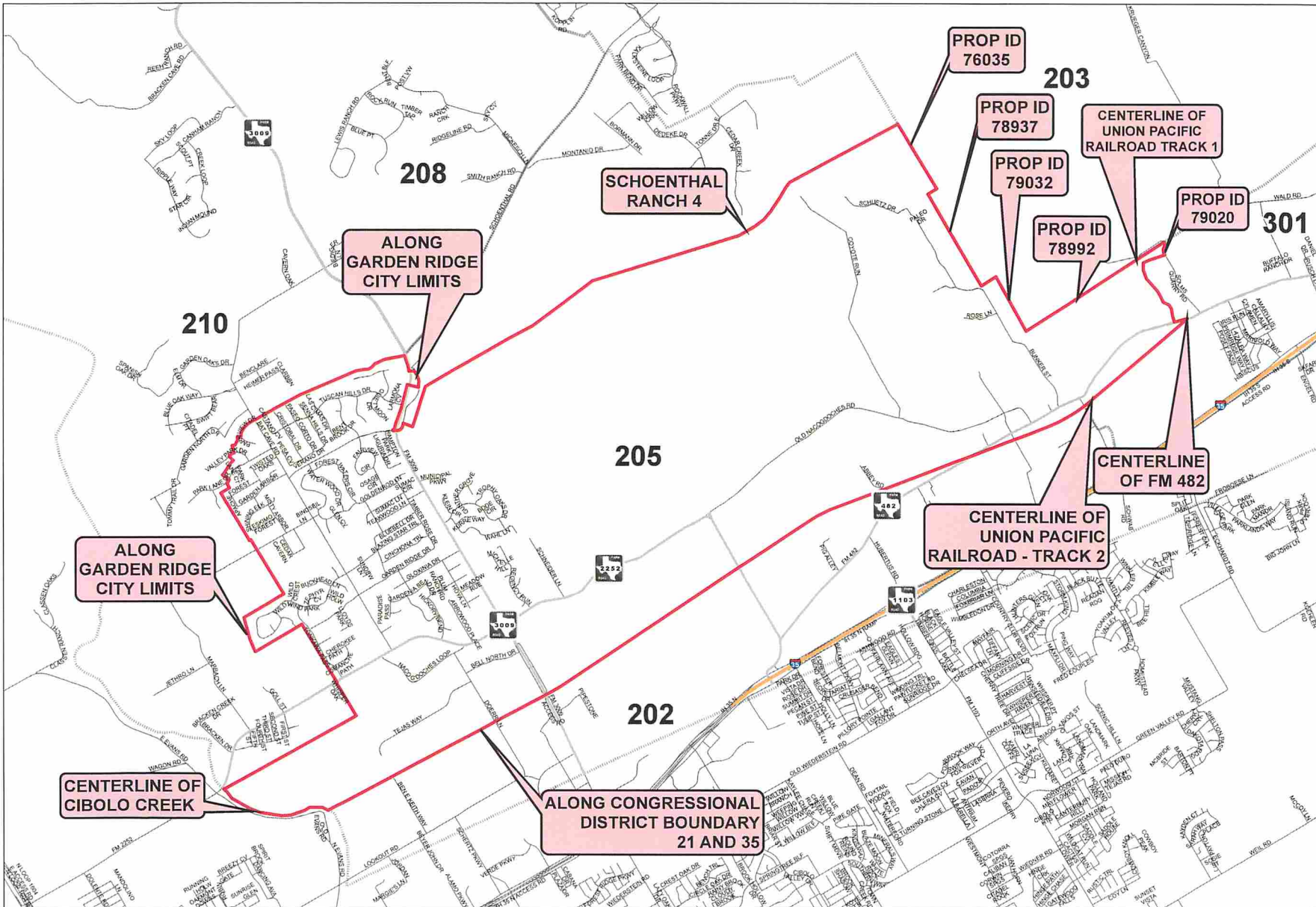
- Precinct Boundary
- Voting Precinct
- Farm roads
- Highways
- Street Centerline



Map Produced by:  
Comal County Engineers' Office  
195 David Jones Dr New Braunfels, TX 78132

Map Approved by:  
Comal County Elections - Cynthia Jaqua  
396 N. Seguin Ave New Braunfels, TX 78130

The information here provides a visual display of data for your convenience and is subject to these Terms of Use. The County of Comal has only attempted to assure the accuracy of this information for its internal uses and for no other purposes. Consequently, the County of Comal makes no warranty, representation or guaranty as to the content, sequence, accuracy, timeliness or completeness of all or any part of this document. The user of this document should not rely on the data provided herein for any reason unless and until the user independently verifies the accuracy of any such data to the user's personal satisfaction. The County of Comal explicitly disclaims any representations and warranties, including, without limitation, the implied warranties of merchantability and fitness for a particular purpose. The County of Comal shall assume no liability for any errors, omissions, lack of timeliness or inaccuracies in the document provided regardless of how caused. The County of Comal shall assume no liability for any decisions made or actions taken or not taken by the use of this document in reliance upon any information or data furnished hereunder. This product is for informational purposes only and may not have been prepared for or be suitable for legal, engineering, or surveying purposes. It does not represent an on-the-ground survey and represents only the approximate relative location of property boundaries. The use of this document indicates your unconditional acceptance of these Terms of Use and your unconditional acceptance of all risks associated.



# Proposed Voting Precinct 210



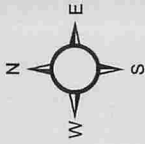
**COMAL COUNTY**  
Elections Office

Comal County Elections Office  
396 N. Seguin Ave  
New Braunfels, Texas 78130  
Phone: 830-221-1352

**Effective Date:**  
January 1, 2026

**Legend**

- Precinct Boundary
- Voting Precinct
- Farm Road
- Highway
- Street Centerline



Map Produced by:  
David Jones  
Comal County Engineer's Office  
195 David Jones Dr New Braunfels, TX 78132

Map Approved by:  
Cynthia Japuntich  
Comal County Elections - Cynthia Japuntich  
328 W. Seguin Ave New Braunfels, TX 78130

This information provides a visual display of data for your convenience and is subject to these Terms of Use. The County of Comal has only attempted to use the information for the purposes of general information and for no other purposes. Consequently, the County of Comal makes no warranty, representation of fitness or completeness of all or any part of this information. The user of this document should not rely on the information for any legal, engineering, or surveying purposes. The County of Comal shall assume no liability for any use of this document in reliance upon any information or data furnished hereunder. This product is for informational purposes only. It is not intended for or suitable for legal, engineering, or surveying purposes. It does not represent an on-the-ground survey or other professional service. The user of this document indicates their acceptance of these Terms of Use and their unconditional acceptance of all risks associated.

