

**NOTICE IS HEREBY GIVEN OF A BOUNDARY CHANGE IN
COMAL COUNTY ELECTION PRECINCT 305**
*(POR LA PRESENTE SE NOTIFICA UN CAMBIO DE LÍMITES EN EL PRECINTO
ELECTORAL 305 DEL CONDADO DE COMAL)*

The boundary change will split Precinct 305 along the Centerlines of Conrads Lane, FM 1102, FM 2439, Goodwin Lane, FM 306, Guadalupe River, Loop 337, Summerwood Drive, Buttercup Lane, Tulip Lane, Gruene Road, Shannon Circle, Union Pacific Railroad Track 1. Also, along Right-of-Way of IH 35N, Comal and Hays Common Boundary, and Congressional District Boundary 21 and 35. Precinct 307 will absorb centerlines of Guadalupe River, Loop 337, Summerwood Drive, Buttercup Lane, Tulip Lane, Gruene Road, Shannon Circle, Union Pacific Railroad-Track 1, FM 306, and along Congressional District Boundary 21 and 35. Precinct 309 will absorb centerlines of FM 306, Goodwin Lane, Conrads Lane, and along Congressional District Boundary 21 and 35. Precincts 305, 307, and 309 are reflected in the maps posted on the Comal County Elections website, votecomal.com, pursuant to an order of Comal County Commissioners Court on April 24, 2025, in accordance with Section 42.006 of the Election Code to become effective January 1, 2026. *(El cambio de límite dividirá el Precinto 305 a lo largo de las líneas centrales de Conrads Lane, FM 1102, FM 2439, Goodwin Lane, FM 306, Guadalupe River, Loop 337, Summerwood Drive, Buttercup Lane, Tulip Lane, Gruene Road, Shannon Circle, Union Pacific Railroad Track 1. También, a lo largo del derecho de paso de IH 35N, Comal y Hays Common Boundary, y el límite del distrito congresional 21 y 35. El Precinto 307 absorberá las líneas centrales de Guadalupe River, Loop 337, Summerwood Drive, Buttercup Lane, Tulip Lane, Gruene Road, Shannon Circle, Union Pacific Railroad-Track 1, FM 306, y a lo largo del límite del distrito congresional 21 y 35. El Precinto 309 absorberá las líneas centrales de FM 306, Goodwin Lane, Conrads Lane, y a lo largo del límite del distrito congresional 21 y 35. Precintos Los números 305, 307 y 309 se reflejan en los mapas publicados en el sitio web de Elecciones del Condado de Comal, votecomal.com, de conformidad con una orden del Tribunal de Comisionados del Condado de Comal del 24 de abril de 2025, de conformidad con la Sección 42.006 del Código Electoral, que entrará en vigencia el 1 de enero de 2026.)*

SEE ATTACHMENTS

Voting Precinct 305

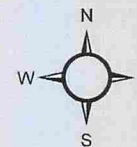


Comal County Elections Office
396 N. Seguin Ave
New Braunfels, Texas 78130
Phone: 830-221-1352

Effective Date:
January 1, 2024

Legend

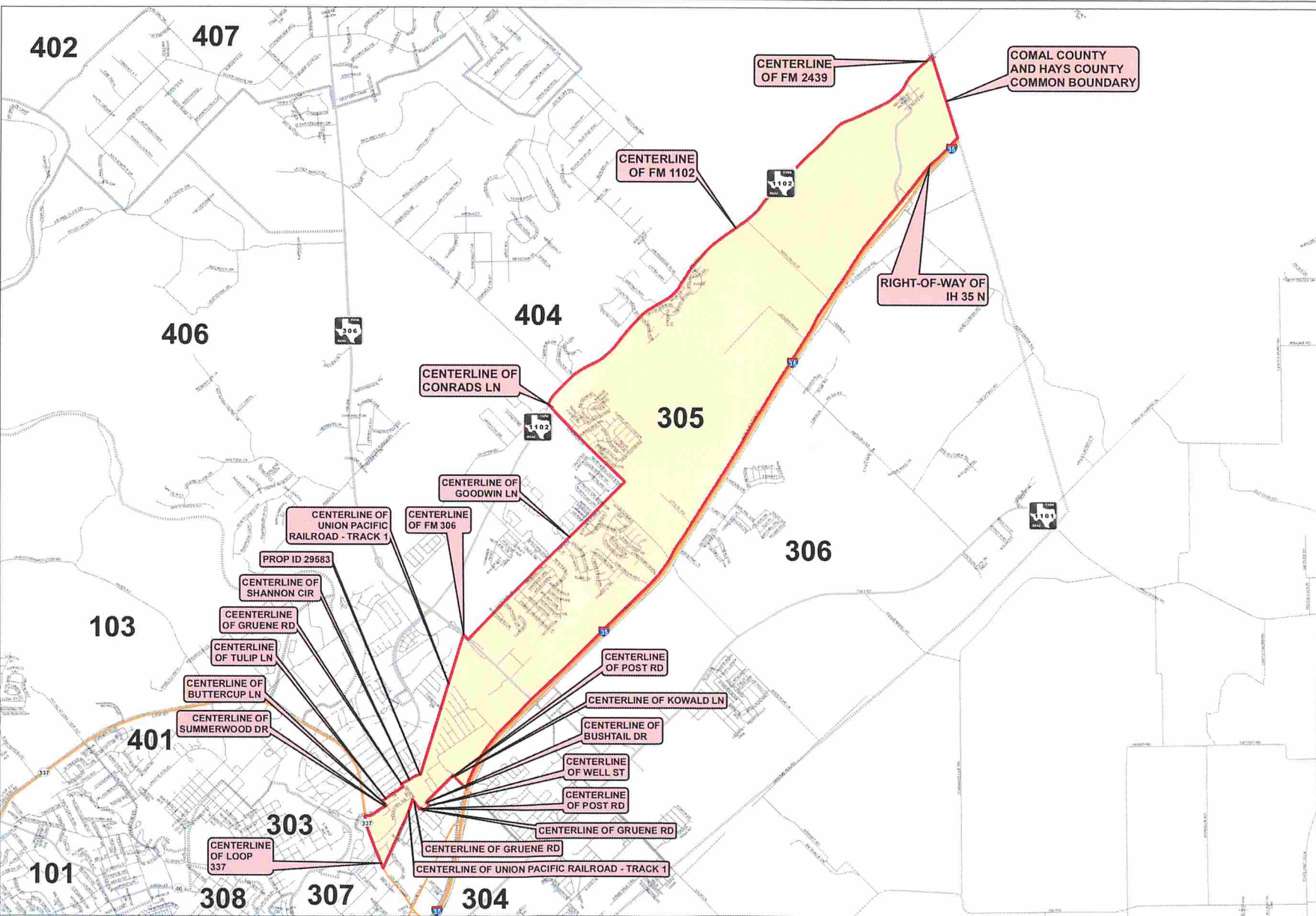
- Precinct Boundary
- Voting Precincts
- Farm roads
- Highways
- Street Centerlines



Map Produced by:
Comal County Engineer's Office
195 David Jones Dr New Braunfels, TX 78132

Map Approved by:
Comal County Elections - Cynthia Jaqua
306 N. Seguin Ave New Braunfels, TX 78130

The information here provides a visual display of data for your convenience and is subject to these Terms of Use. The County of Comal has only attempted to assure the accuracy of this information for its internal uses and for no other purposes. Consequently, the County of Comal makes no warranty representation of guaranty as to the content, sequence, accuracy, timeliness or completeness of all or any part of this document. The user of this document should not rely on the data provided herein for any reason unless and until the user independently verifies the accuracy of any such data to the user's personal satisfaction. The County of Comal explicitly disclaims any representations and warranties, including, without limitation, the implied warranties of merchantability and fitness for a particular purpose. The County of Comal shall assume no liability for any errors, omissions, lack of timeliness or inaccuracies in the document provided regardless of how caused. The County of Comal shall assume no liability for any decisions made or actions taken or not taken by the use of this document in reliance upon any information or data furnished hereunder. This product is for informational purposes and may not have been prepared for or be suitable for legal, engineering, or surveying purposes. It does not represent an on-the-ground survey and represents only the approximate relative location of property boundaries. The use of this document indicates your unconditional acceptance of these Terms of Use and your unconditional acceptance of all risks associated



Proposed Voting Precinct 305

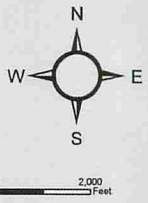


COMAL COUNTY
Elections Office

Comal County Elections Office
396 N. Seguin Ave
New Braunfels, Texas 78130
Phone: 830-221-1352

Effective Date:
January 1, 2026

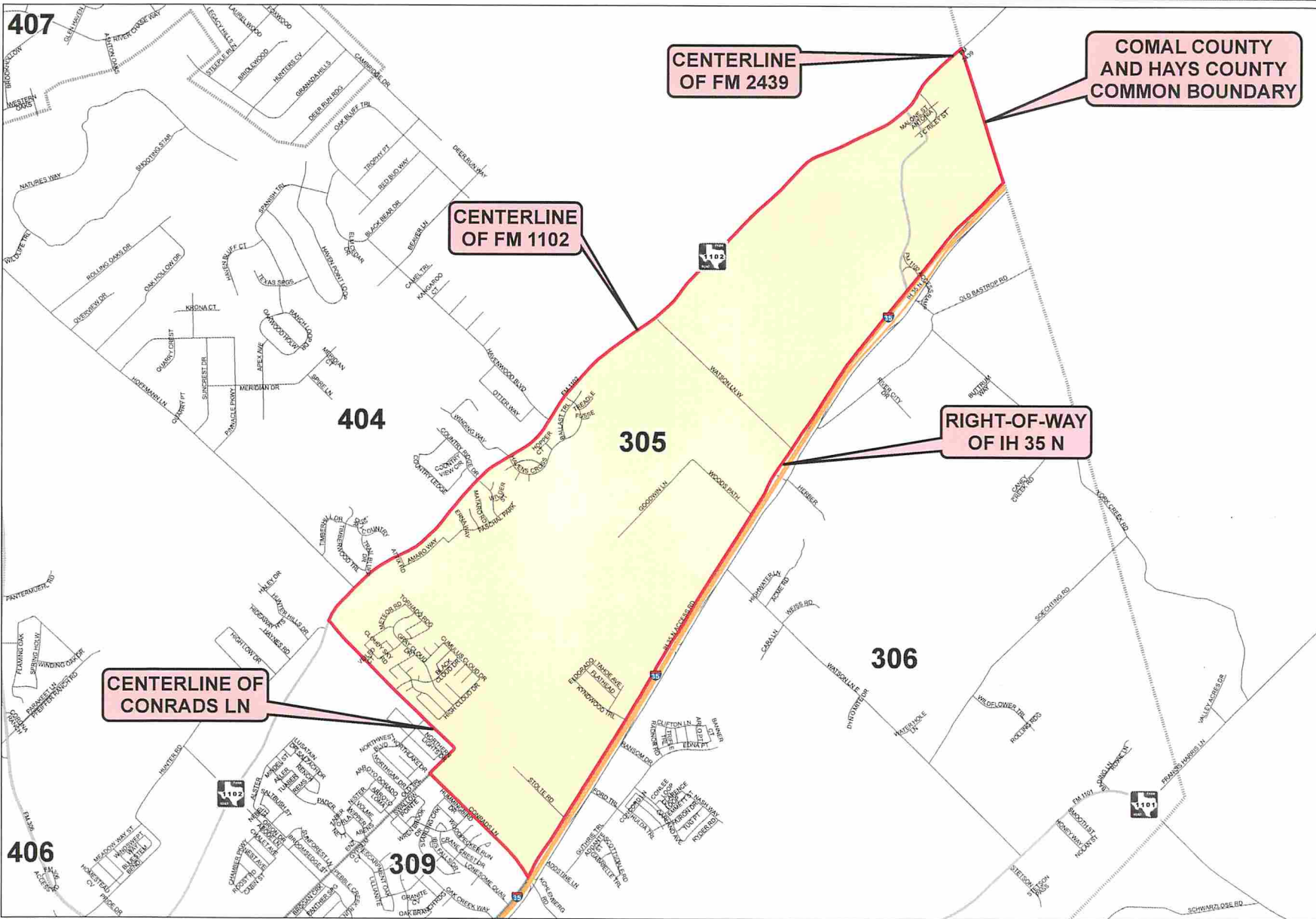
- Legend**
- Precinct Boundary
 - Voting Precinct
 - Farm Road
 - Highway
 - Street Centerline



Map Produced by:
Comal County Engineer's Office
155 David Jones Dr New Braunfels, TX 78132

Map Approved by:
Comal County Elections - Cynthia Jaqua
396 N. Seguin Ave New Braunfels, TX 78130

The information here provides a visual display of data for your convenience and is subject to these Terms of Use. The County of Comal has only attempted to assure the accuracy of this information for its internal uses and for no other purposes. Consequently, the County of Comal makes no warranty, representation of guaranty as to the content, sequence, accuracy, timeliness or completeness of all or any part of this document. The user of this document should not rely on the data provided herein for any reason unless and until the user independently verifies the accuracy of any such data to the user's personal satisfaction. The County of Comal explicitly disclaims any representations and warranties, including, without limitation, the implied warranties of merchantability and fitness for a particular purpose. The County of Comal shall assume no liability for any errors, omissions, lack of finality or inaccuracies in the document provided regardless of how caused. The County of Comal shall assume no liability for any decisions made or actions taken or not taken by the use of this document in reliance upon any information or data furnished hereunder. This product is for informational purposes and may not have been prepared for or be suitable for legal, engineering, or surveying purposes. It does not represent an on-the-ground survey and represents only the approximate relative location of property boundaries. The use of this document indicates your unconditional acceptance of these Terms of Use and your unconditional acceptance of all risks associated.



Proposed Voting Precinct 307

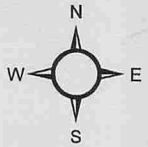


Comal County Elections Office
396 N. Seguin Ave
New Braunfels, Texas 78130
Phone: 830-221-1352

Effective Date:
January 1, 2026

Legend

- Precinct Boundary
- Voting Precinct
- Farm Road
- Highway
- Street Centerline

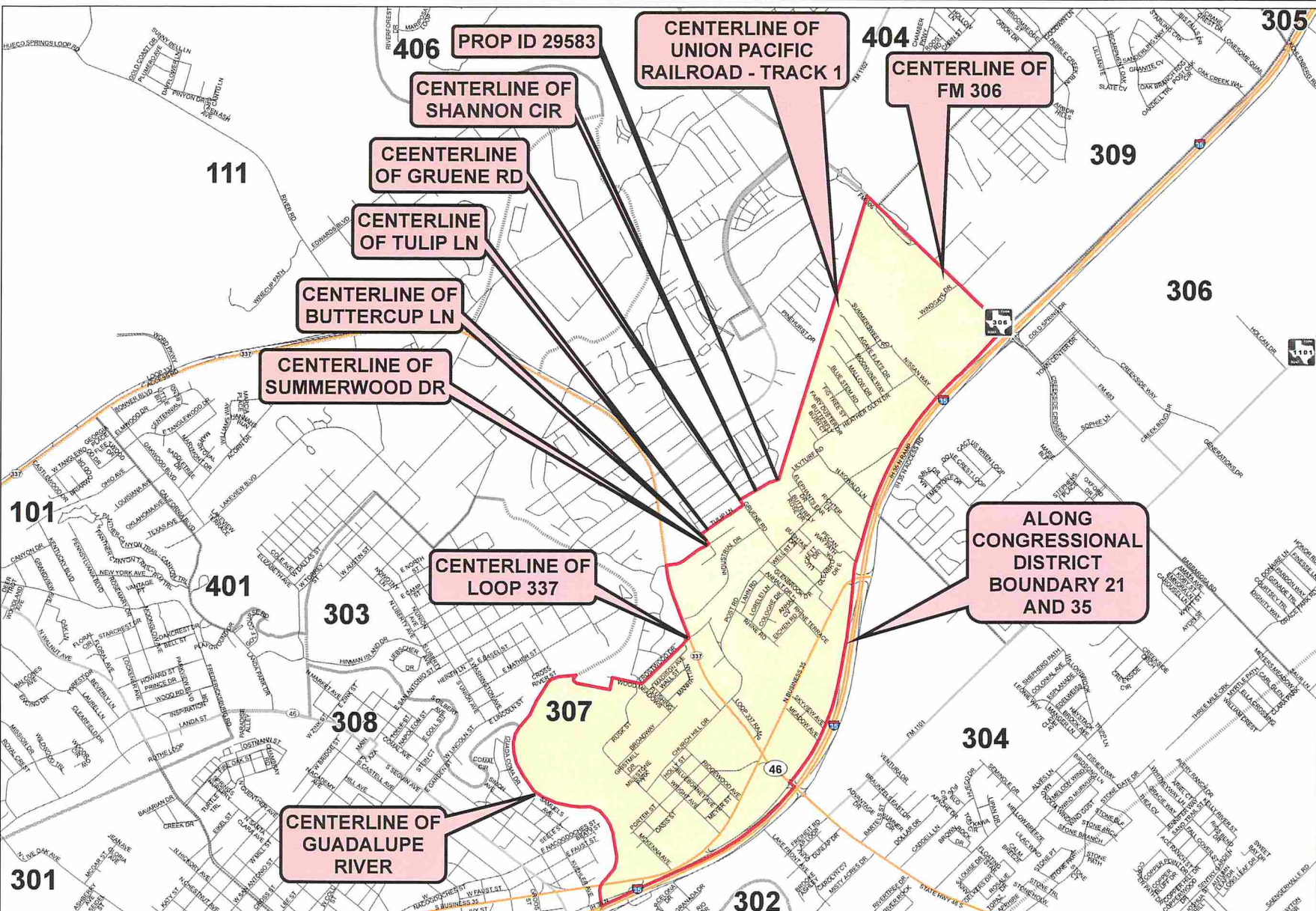


0 2,000 Feet

Map Produced by:
Comal County Engineers' Office
155 David Jones Dr New Braunfels, TX 78132

Map Approved by:
Comal County Elections - Cynthia Jaques
396 N. Seguin Ave New Braunfels, TX 78130

The information here provides a visual display of data for your convenience and is subject to these Terms of Use. The County of Comal has only attempted to assure the accuracy of this information for its internal uses and for no other purposes. Consequently, the County of Comal makes no warranty, representation or guarantee as to the content, sequence, accuracy, timeliness or completeness of all or any part of this document. The user of this document should not rely on the data provided herein for any reason unless and until the user independently verifies the accuracy of any such data to the user's personal satisfaction. The County of Comal explicitly disclaims any representations and warranties, including, without limitation, the implied warranties of merchantability and fitness for a particular purpose. The County of Comal shall assume no liability for any errors, omissions, lack of timeliness or inaccuracies in the document provided regardless of how caused. This product is for informational purposes and may not have been prepared for or be suitable for legal, engineering, or surveying purposes. It does not represent an on-the-ground survey and represents only the approximate relative location of property boundaries. The use of this document indicates your unconditional acceptance of these Terms of Use and your unconditional acceptance of all risks associated.



Proposed Voting Precinct 309

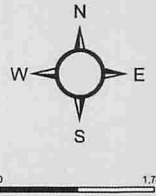


COMAL COUNTY
Elections Office
Comal County Elections Office
396 N. Seguin Ave
New Braunfels, Texas 78130
Phone: 830-221-1352

Effective Date:
January 1, 2026

Legend

- Precinct Boundary
- Voting Precinct
- Farm Road
- Highway
- Street Centerline



Map Produced by:
Comal County Engineer's Office
195 David Jones Dr New Braunfels, TX 78132

Map Approved by:
Comal County Elections - Cynthia Jaeger
396 N. Seguin Ave New Braunfels, TX 78130

The information here provides a visual display of data for your convenience and is subject to these Terms of Use. The County of Comal has only attempted to ensure the accuracy of this information for its internal uses and for no other purposes. Consequently, the County of Comal makes no warranty, representation or guaranty as to the content, sequence, accuracy, timeliness or completeness of all or any part of this document. The user of this document should not rely on the data provided herein for any reason unless and until the user independently verifies the accuracy of any such data to the user's personal satisfaction. The County of Comal explicitly disclaims any representations and warranties, including, without limitation, the implied warranties of merchantability and fitness for a particular purpose. The County of Comal shall assume no liability for any errors, omissions, lack of timeliness or inaccuracies in the document provided regardless of how caused. The County of Comal shall assume no liability for any decisions made or actions taken or not taken by the use of this document in reliance upon any information or data furnished hereunder. This product is for informational purposes and may not have been prepared for or be suitable for legal, engineering, or surveying purposes. It does not represent an on-the-ground survey and represents only the approximate relative location of property boundaries. The use of this document indicates your unconditional acceptance of these Terms of Use and your unconditional acceptance of all risks associated.

