

Region 11 Guadalupe

Regional Flood Planning Group

The Region 11 Guadalupe Regional Flood Planning Group (RFPG) is soliciting nominations to fill one (1) voting position on the Region 11 Guadalupe RFPG.

Nominees who either operate in or have interests in the Region 11 Guadalupe RFPG are being solicited to represent the following interest groups:

Voting Members (1 seat) Industries

The Guadalupe RFPG was established by the Texas Water Development Board on October 1, 2020, through the designation of initial flood planning group members. The Guadalupe RFPG consists of portions of Bandera, Bastrop, Blanco, Caldwell, Calhoun, Comal, DeWitt, Fayette, Gillespie, Goliad, Gonzales, Guadalupe, Hays, Karnes, Kendall, Kerr, Lavaca, Real, Refugio, Travis, Victoria and Wilson counties lying within the Guadalupe River Basin.

Article V. Section 3 of the adopted Guadalupe RFPG Bylaws states that in order to be eligible for voting membership, a person must be capable of adequately representing the interest for which a member is sought, be willing to participate in the regional flood planning process, attend meetings, and abide by these bylaws.

Counties are defined as the county governments for the 254 counties in Texas.

Nomination forms may be submitted through email to Mary Newman at mnewman@gbra.org, or by printing the nomination form, completing it and mailing to 2225 E. Common Street, New Braunfels, TX 78130 Attn: Mary Newman. **Nominations must be received by 5:00pm, Monday, June 9, 2025.**

Region 11 Guadalupe RFPG

Member Nomination Form

Date:

Name & Email of person submitting this form (Nominator, may be the same as nominee):

Nominee Name:

Nominee Phone:

Nominee E-mail:

Nominee Mailing Address:

County in which the nominee resides:

Nominee Occupation:

Nomination for Interest Group (Check One)

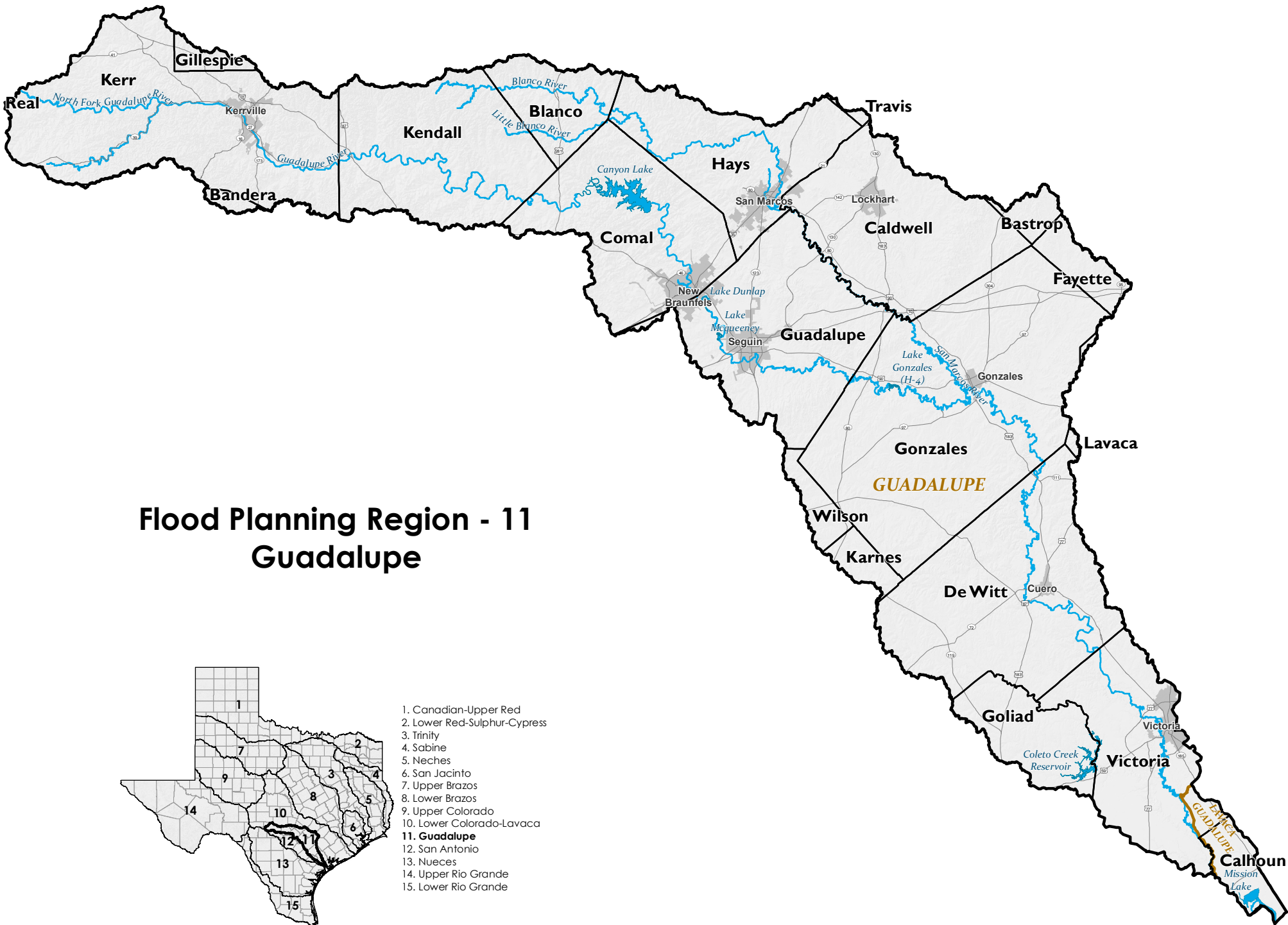
- Agricultural
- Counties
- Electric Generating Utilities
- Environmental
- Flood Districts
- Industries
- Municipalities
- Public
- River Authorities
- Small Business
- Water Districts
- Water Utilities

Brief bio and summary of qualifications specific to interest group

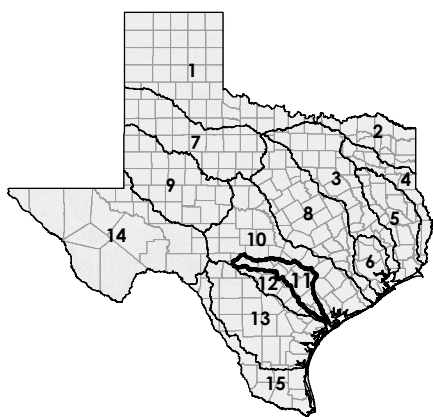
General type of flood-related knowledge, experience, and approximately number of years of being involved in flood-related issues.

Please provide 2 references (Name, title/affiliation, phone number)

Please list any optional attachments included (Resume, CV, Resolutions, etc.)



Flood Planning Region - 11 Guadalupe



1. Canadian-Upper Red
2. Lower Red-Sulphur-Cypress
3. Trinity
4. Sabine
5. Neches
6. San Jacinto
7. Upper Brazos
8. Lower Brazos
9. Upper Colorado
10. Lower Colorado-Lavaca
11. **Guadalupe**
12. San Antonio
13. Nueces
14. Upper Rio Grande
15. Lower Rio Grande

- County boundaries
- Major river basin boundaries
- Major roadways
- Major reservoirs
- Major rivers
- County seats



DISCLAIMER: This map was generated by the Texas Water Development Board using GIS (Geographical Information System) software. No claims are made to the accuracy or completeness of the information shown herein nor to its suitability for a particular use. The scale and location of all mapped data are approximate. Map date: 05/01/2020

Texas Water Development Board
 1700 North Congress Avenue, Austin, TX 78701
www.twdb.texas.gov - @twdb - facebook.com/twdbboard

